



sunbilt™
creative
sunrooms

At last, a prefabricated, high quality sunroom designed and engineered for commercial and residential use.

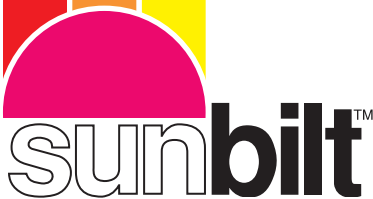
No doubt about it, the building boom is on. Americans are renovating, rebuilding and refurbishing like never before. And whether they're hotel owners or homeowners, professional builders or "do it yourselves," they've got one common goal: getting the utmost value for their money.

A glass enclosure from **Sunbilt** offers them just that. Designed for maximum energy savings, weather tightness and durability, **Sunbilt sunrooms** provide the highest grade structural components and glass available. They offer the buyer unmatched beauty and versatility—at a price that's substantially less than adding on a conventional room.

Most important, **Sunbilt guarantees** that its glass enclosures are the strongest, most durable designs on the market. For example, **Sunbilt's** heavy duty tubular framing weighs *twice* that of most competitive systems. That's a claim to quality no other manufacturer can match!

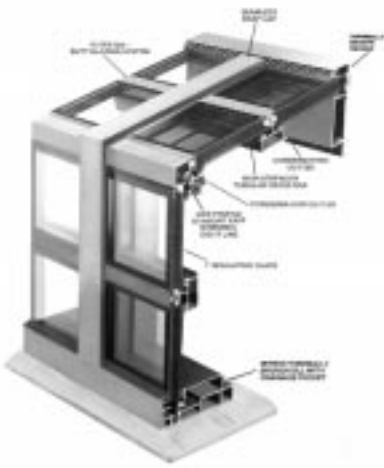
We're willing to go the extra distance to make sure our customers get the utmost in reliability, value and service. That's why quality **Sunbilt** products are sold and installed only by professionals who possess the highest industry standards.

Sunbilt Solar Products is an affiliated company of J. Sussman Inc., a family-owned company famous for its quality glass and metal products. Since 1906, tens of thousands of custom Sussman windows, skylights, domes and other products have been designed and assembled in our modern 80,000 square foot manufacturing facilities, and have been used in applications ranging from landmark buildings and offices to restaurants, hotels and homes worldwide.



Features:

- High strength tubular rafters and cross bars to sustain wind load and snow load requirements.
- Heavy duty extruded anchor clips and shear blocks at all connections.
- Exterior stainless steel screws.
- Neoprene bonded washers used with all pressure plate screws to prevent water seepage through screw holes.
- Entire system is thermally broken aluminum to insulate the cold temperature outside from a warmer temperature inside and to help eliminate condensation.
- 1" insulated tempered glass is standard for all vertical glass.
- 1" insulated tempered over laminated safety glass optional for all roof glass.
- Large 40¼" radius (as opposed to approximate 24" radius by other manufacturers) on all curved eave models enhances the beauty of the sunroom.
- Concealed fasteners and connecting clips.
- No unsightly inner or outer seams on structural components.
- 7/8" rabbet depth covering glass promoting greater weathertightness and reducing glass sealant damage from the sun's ultraviolet rays.
- ¼" edge clearance between metal and glass at perimeter of the glass panels to promote moisture dehydration at insulated glass edges.
- Dual glazing system of the finest E.P.D.M. rubber gaskets with a secondary exterior wet sealant around the perimeter of all glass panels to prevent air and water infiltration.
- Both primary and secondary condensation gutters to channel any condensation to the exterior.
- Continuous thermally broken sill with integral water barrier that promotes positive water drainage eliminating water accumulation under the glass, a major cause of glass sealant failure.
- The all new KLEERTEK™ Glazing System for curved and straight eave units eliminates exterior caps. See next page for full description.
- Full ½" wide cushioned bearing surface for insulating glass, reducing the possibility of glass failure.



KLEERTEK™ GLAZING SYSTEM

The new **KLEERTEK™** Glazing System is available in both curved and straight eave models. This new **Sunbilt** design creates a crystalline illusion of one sheet of glass top to bottom. The straight eave model has a low profile eave with a minimal site line.

- Eliminates exterior cross caps creating a more pleasing appearance.
- Prevents unsightly accumulation of dirt and water.
- Thermally efficient.
- Maintenance free.

Sunbilt Solar Products have full capabilities to customize all sunroom projects. Through its affiliated company, J. Sussman Inc. Sunbilt offers custom skylights, barrel vaults, walkways, domes and other types of glass enclosures. Custom windows and projected vents are also available.



MOBILE CHEMICAL BUILDING, Edison, N.J.
 Glazing Contractor: Union County Plate Glass
 Architect: CUH2A
 Photographer: Wolfgang Hoyt/ESTO

commercial



Looking for room to grow? Consider a quality glass enclosure from **Sunbilt**. Our prefabricated units are more than just beautiful...they're beautifully designed inside and out. Thermally broken, watertight construction. Plus structural components substantially stronger and heavier than comparable systems. For today's most advanced and durable sunrooms, remember **Sunbilt**...the key to profitability for growing businesses.

POINT PLEASANT HOSPITAL, Point Pleasant, N.J.
 Glazing Contractor: Newark Glass
 Architect: Ferrenz & Taylor, Inc.

LONG ISLAND RESIDENCE, New York
Glazing Contractor: Levitt Bros.
Architect: P.H. Taun Associates



RESIDENCE, Connecticut
Glazing Contractor: Sunrooms etc.



residential

Make the most of your living space with a prefabricated glass enclosure from **Sunbilt**. Our sunrooms are structurally stronger *and* heavier than comparable systems by more than 50%. And they cost less than building on a conventional room! For the highest quality, most durable sunroom available, specify **Sunbilt**. The people who design products to fit your lifestyle...beautifully.

STRAIGHT EAVE SUNBILT SUNROOM, Michigan
Glazing Contractor: Transparent Solutions



LONG ISLAND RESIDENCE, New York
Glazing Contractor: FCP Contracting
Architect: Norman Wax



NICK'S CHAR PIT, Connecticut
Glazing Contractor: Sunrooms etc.



COLONY INN, New Haven, Conn.
Glazing Contractor: Suntech of Conn.
Architect: Richard M. Bellamy



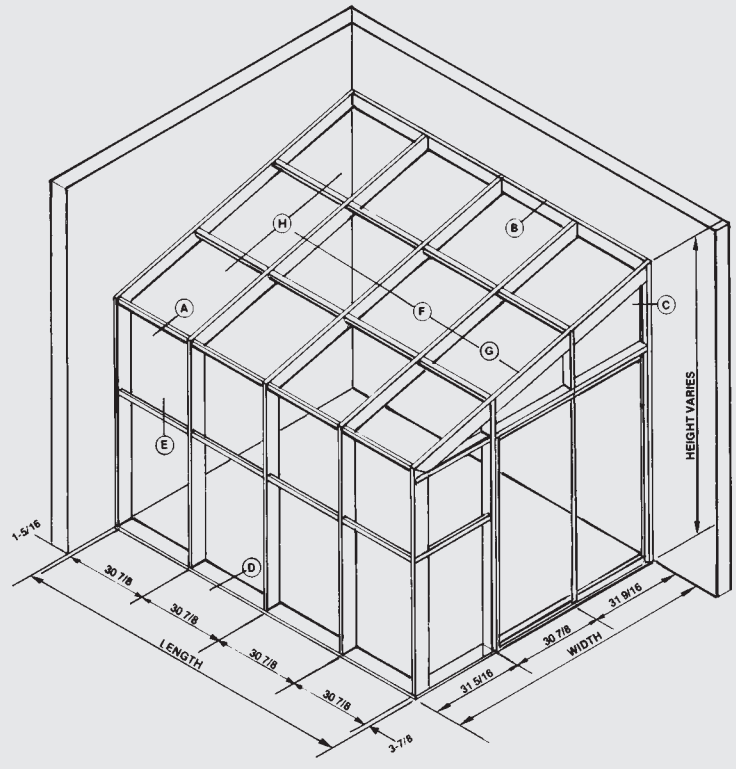
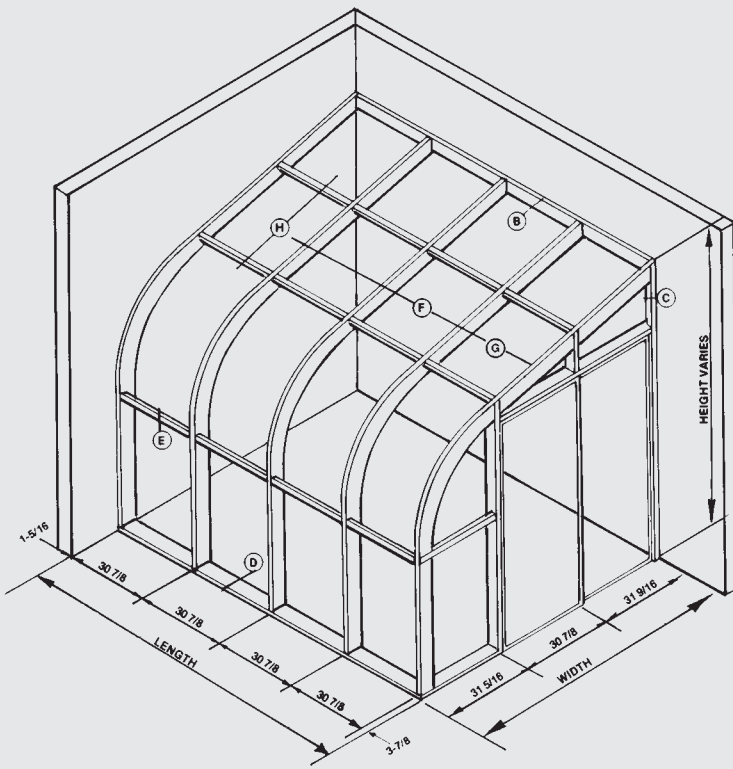
PIZZA HUT, Bellerose, New York
Glazing Contractor: Clearview Plate Glass

restaurants

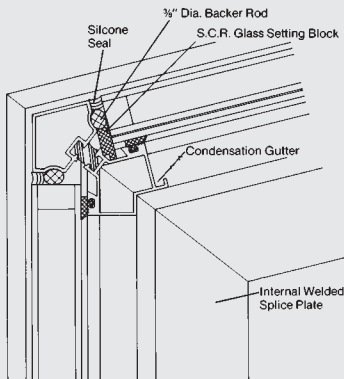
Hungry for more business? Add-on an elegant **Sunbilt** dining enclosure and attract diners to your restaurant 48% faster. Our prefabricated units are energy-efficient and virtually maintenance-free. Sunbilt glass enclosures. Quality and reliability you can rely on...without reservation.

PAOLUCCI'S RESTAURANT, Millbrook, New York
Glazing Contractor: Empire Supply Co.

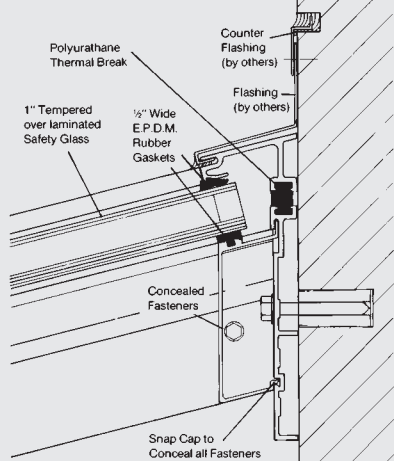




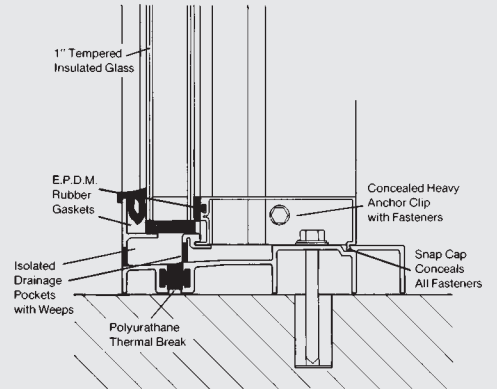
STRAIGHT EAVE A



HEADER B

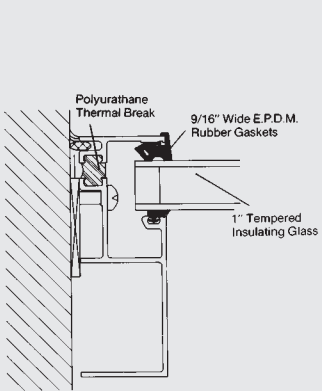


SILL D

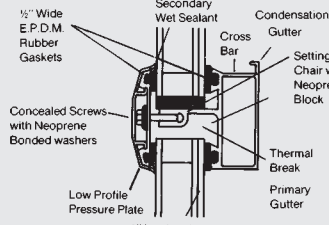


1/4 FULL SIZE

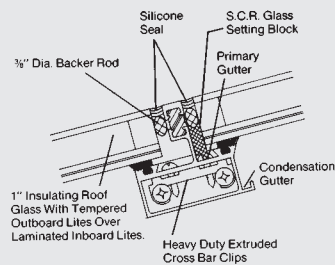
WALL BAR C



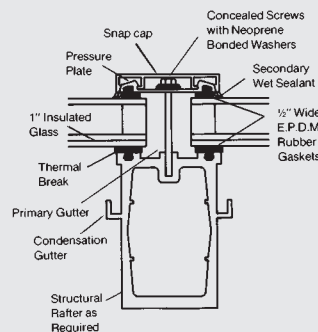
CROSS BAR E



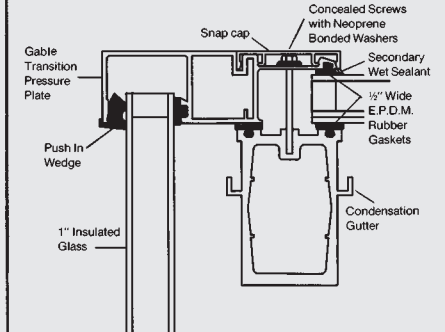
CROSS BAR H



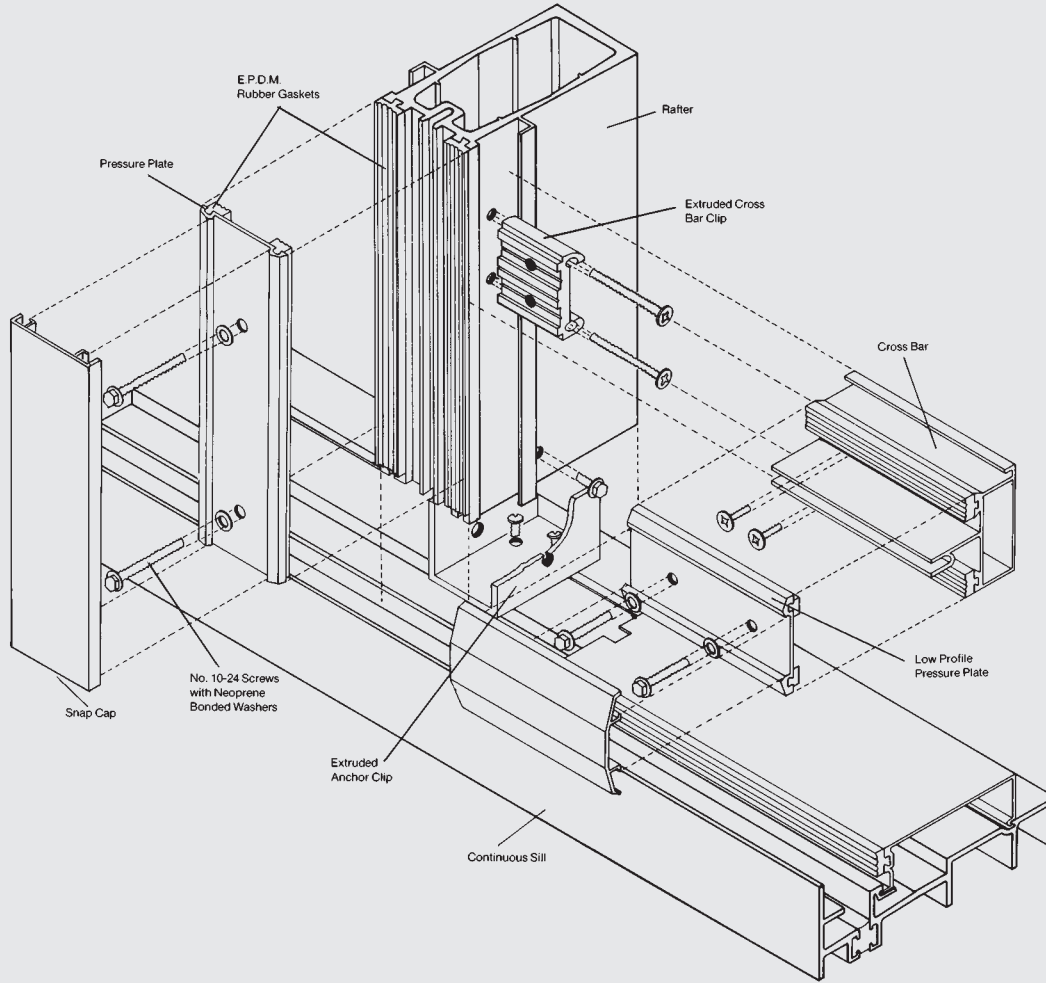
RAFTER F



GLAZED END G



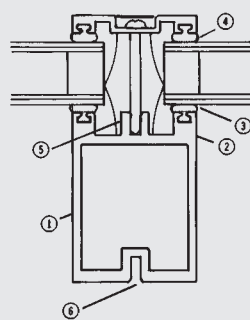
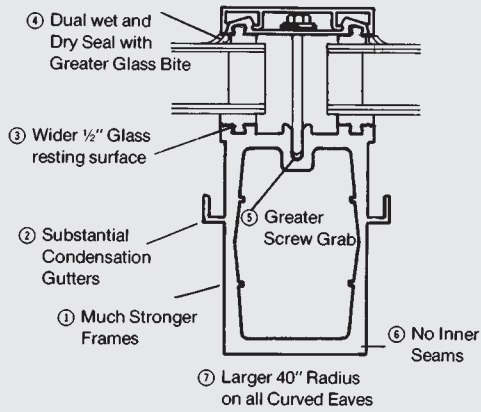
BLOWUP ISOMETRIC



COMPARISON RAFTER

SUNBILT

Other

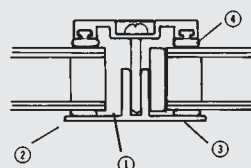
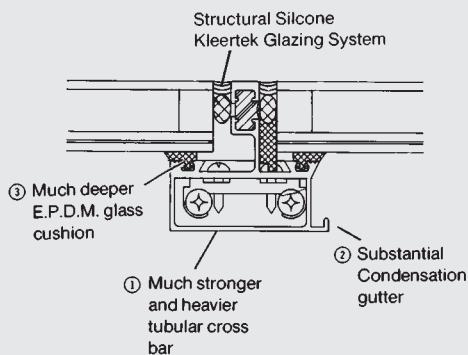


- ① Substantially lighter and weaker frame
- ② Small less effective condensation gutter and no condensation gutter
- ③ Narrow glass resting surface
- ④ Single seal with minimal glass bite
- ⑤ Smaller grab on pressure screws
- ⑥ Unsightly inner seams
- ⑦ Small 24" radii on curved eaves

COMPARISON CROSS BARS

SUNBILT

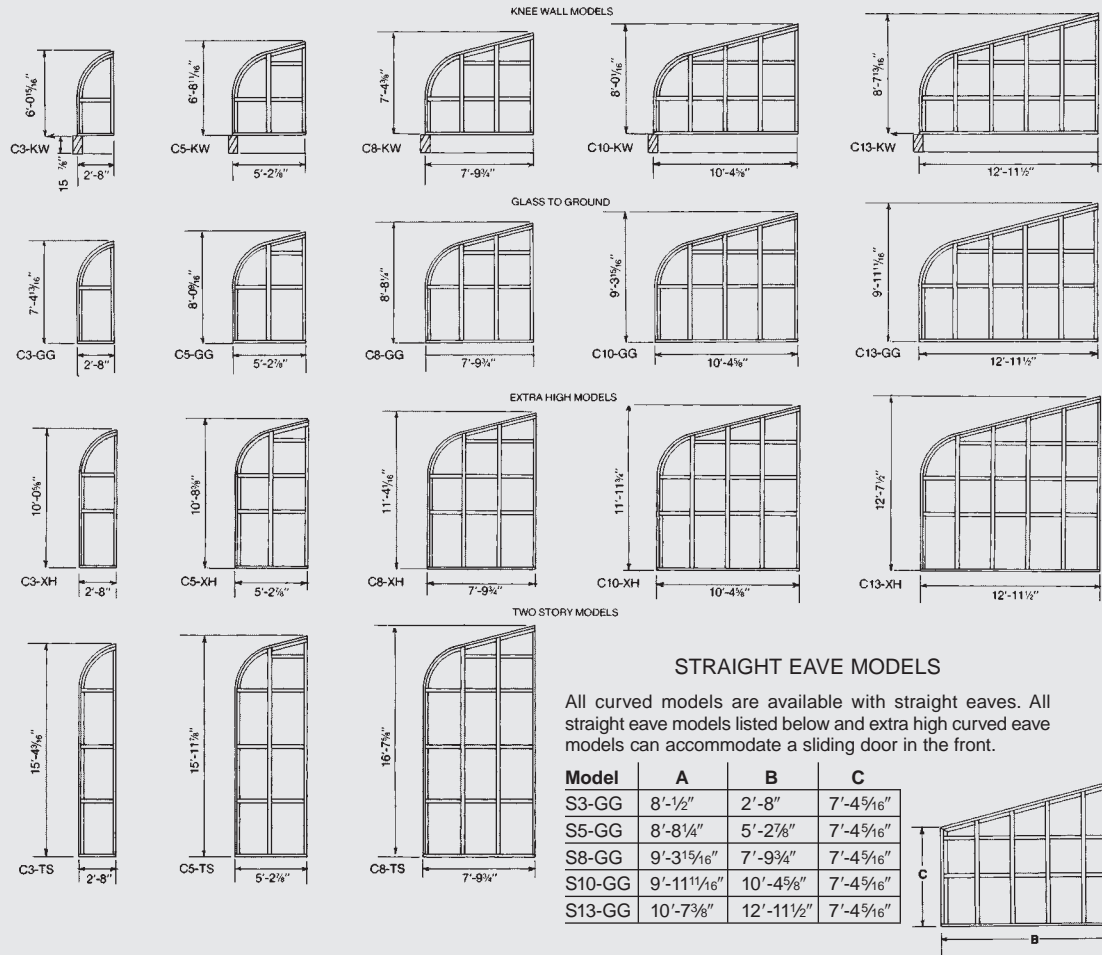
Other



- ① Much weaker non-tubular cross bars
- ② Minimal condensation gutter and no condensation gutter
- ③ Extremely shallow glass cushion
- ④ Single seal with minimal glass bite

In the interest of product improvement, all specifications are subject to change without notice.

STANDARD CURVED MODELS



SUNBILT ACCESSORIES & OPTIONAL FEATURES

GLASS: Clear glass is standard. Bronze tinted and solar cool glass is available at an additional cost. Other types of glass can also be supplied when required.

FRAME: PPG electrostatically applied and baked enamel in bronze finish is standard. Painted white and clear or bronze anodized finishes can be supplied at an additional cost when required.

DOORS: Five ft. wide sliding door 100% thermally broken with 1" tempered insulated glass. A2HP rating exceeds most residential construction requirements and is ideal for commercial and industrial in-

stallations. Tandem steel rollers are standard. Includes screen.

WINDOWS: Thirty inches high project in or out. J. Sussman ventilators 100% thermally broken with 1" tempered insulated glass designed to fit between bays. Exceeds PA3 HP performance specifications (highest standard in the industry). Far superior to any double hung window in preventing air infiltration. White bronze handle with patented heavy duty four bar steel hinges help make this the finest sunroom window on the market. Casement windows are also available. Includes screen.

FANS: Vent Axia fans are the finest energy efficient sunroom fans on the market. They are quiet, reliable, and attractive offering the perfect solution to your ventilating needs. The fan is easily mounted on the roof or gable ends of the sunroom into an insulated glass unit with a hole in it.

SHADES: Window Quilt® Sunroom System insulating shades in a wide variety of colors are available. Special lexan tracking system with heavy duty motor allows smooth and easy operation. Shades can be included at time of sunroom purchase or can be added at a later date. Other kinds of shading is also available.

www.sunbilt.com

sunbiltTM

Sunbilt Solar Products by Sussman Inc.

109-10 180th St.
(718) 297-6040

Jamaica, N.Y. 11433
Telefax No. 718-297-3090

See Sweets 08500/SUS/Buyline 0888 for the custom windows catalog of Sunbilt's affiliated company, J. Sussman, Inc.

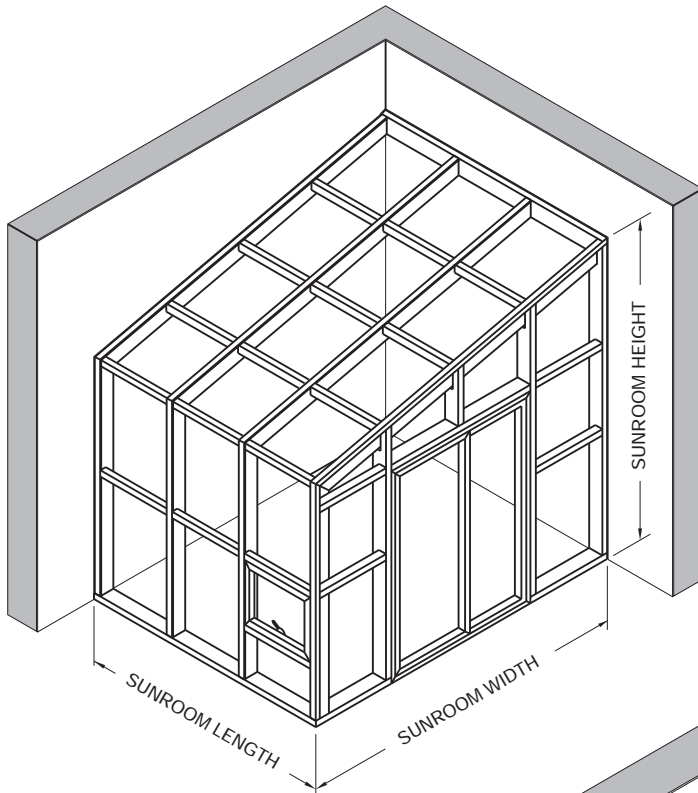
Printed in U.S.A.

Features

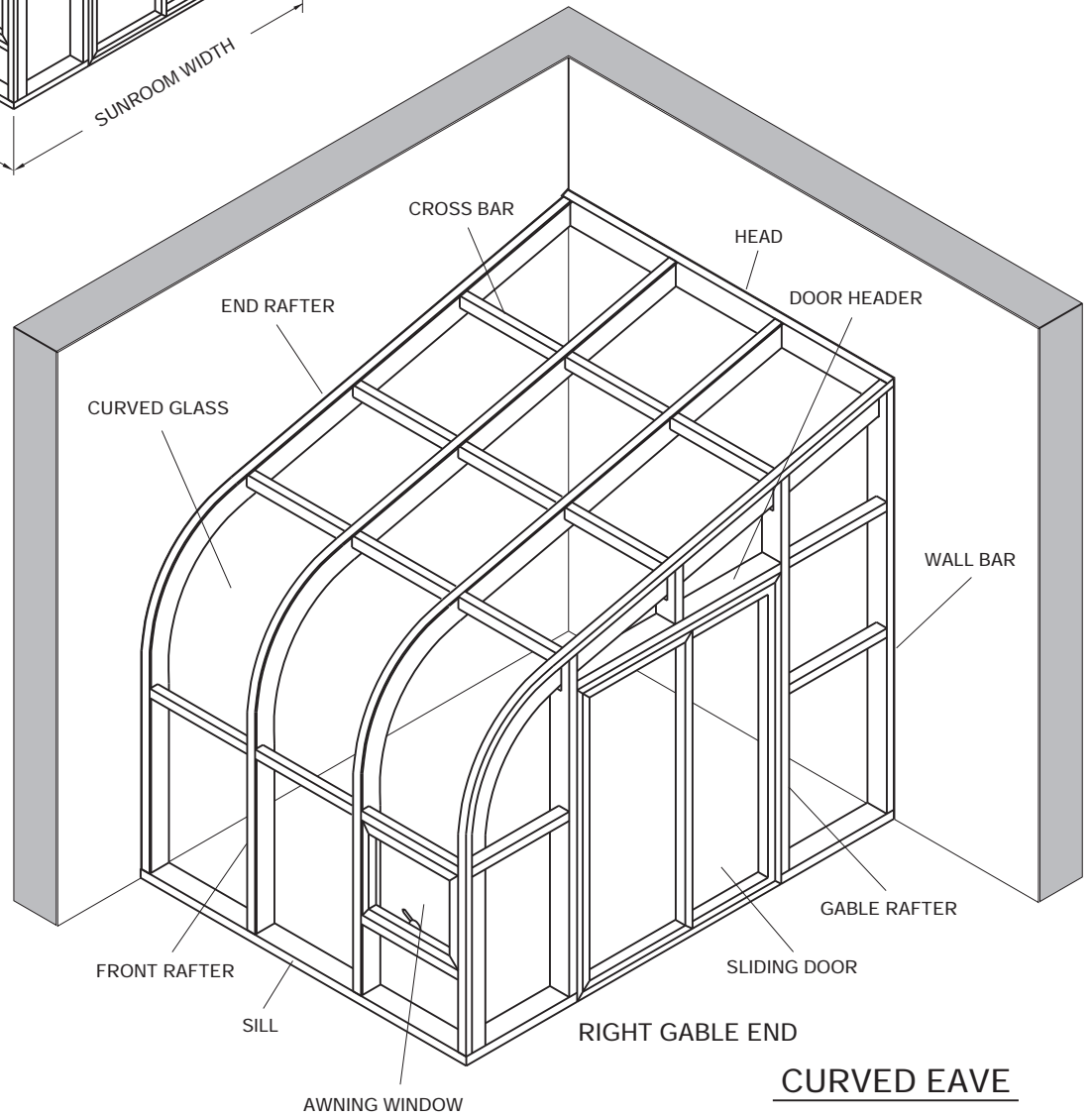
- High strength tubular rafters and cross bars to sustain wind load and snow load requirements.
- Heavy duty extruded anchor clips and shear blocks at all connections.
- Exterior stainless steel screws.
- Neoprene bonded washers used with all pressure plate screws to prevent water seepage through screw holes.
- Entire system is thermally broken aluminum to insulate the cold temperature outside from a warmer temperature inside and to help eliminate condensation.
- 1" insulated tempered glass is standard.
- Large 40 1/4" radius (as opposed to approximate 24" radius by other manufacturers) on all curved eave models enhances the beauty of the sunroom.
- Concealed fasteners and connecting clips.
- No unsightly inner or outer seams on structural components.
- 7/8" rabbet depth covering glass promoting greater weather-tightness and reducing glass sealant damage from the sun's ultraviolet rays.
- 1/4" edge clearance between metal and glass at perimeter of the glass panels to promote moisture dehydration at insulated glass edges.
- Dual glazing system of the finest E.P.D.M. rubber gaskets with a secondary exterior wet sealant around the perimeter of all glass panels to prevent air and water infiltration.
- Both primary and secondary condensation gutters to channel any condensation to the exterior.
- Continuous thermally broken sill with integral water barrier that promotes positive water drainage eliminating water accumulation under the glass, a major cause of glass sealant failure.
- The all new **KLEERTEK**(TM) Glazing system for curved and straight eave units eliminates exterior roof caps.
- Full 1/2" wide cushioned bearing surface for insulating glass, reducing the possibility of glass failure.

Sunbilt Accessories & Optional Features

- **GLASS:** Clear glass is standard. Bronze tinted and LOW-E glass is available at an additional cost. Other types of glass can also be supplied when required.
- **FRAME:** PPG electrostatically applied and baked enamel in bronze or white finish is standard.
- **WINDOWS:** Thirty inches high project in or out, J. Sussman ventilators 100 % thermally broken with 1" tempered insulated glass designed to fit between bays. Exceeds Heavy Commercial Architectural performance specifications (highest standard in the industry). Far superior to any double hung window in preventing air infiltration. White bronze handle with patented heavy duty four bar steel hinges help make this the finest sunroom window on the market. Casement windows are also available. Includes screen.
- **FANS:** Sunbilt fans are the finest energy efficient sunroom fans on the market. They are quiet, reliable, and attractive offering the perfect solution to your ventilating needs. The fan is easily mounted on the roof or gable ends of the sunroom.
- **SHADES:** Window Quilt Sunroom System insulating shades in a wide variety of colors are available. Special polycarbonate tracking system with heavy duty motor allows smooth and easy operation. Shades can be included at time of sunroom purchase or can be added at a later date.
- **DOORS:** Five ft. wide sliding door 100 % thermally broken with 1" tempered insulated glass. A2HP rating exceeds most residential construction requirements and is ideal for commercial and industrial installations. Tandem steel rollers are standard. Includes screen.

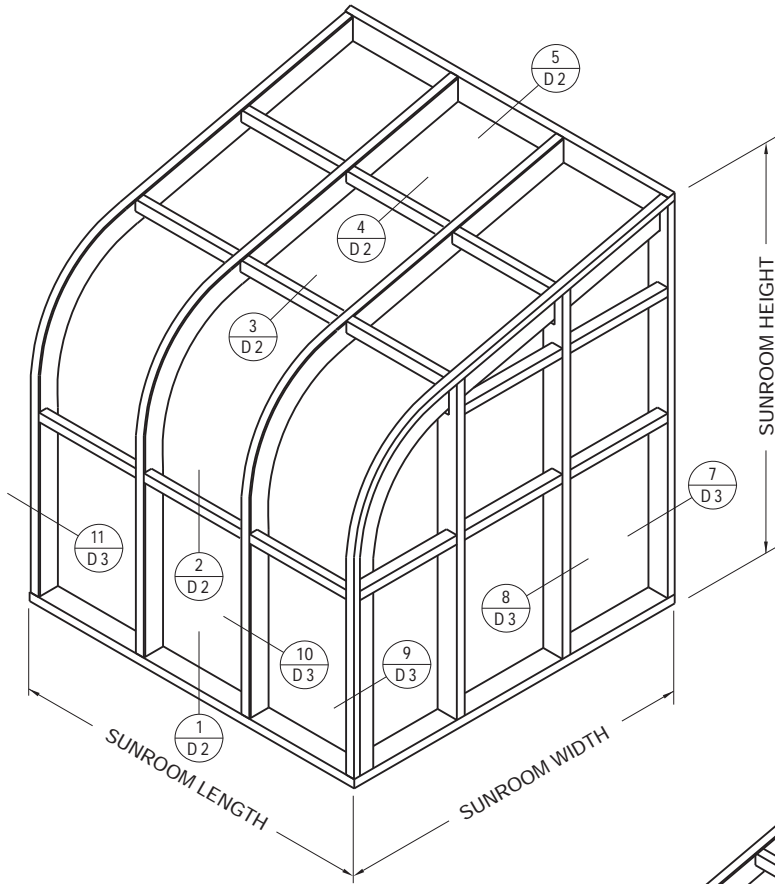


STRAIGHT EAVE

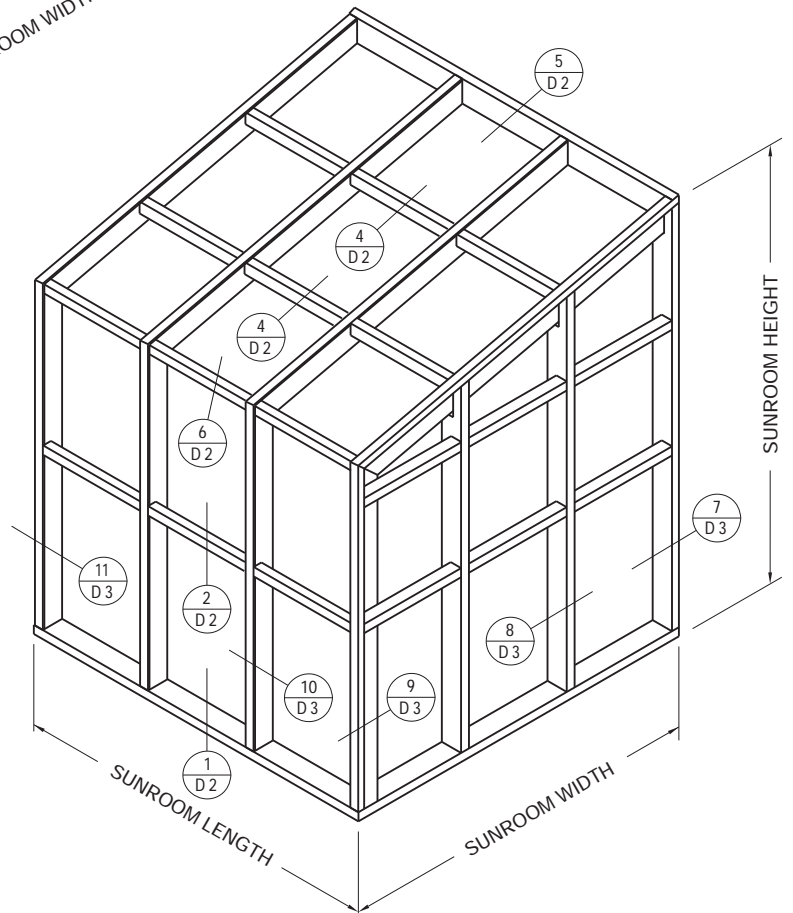


CURVED EAVE

NO SCALE

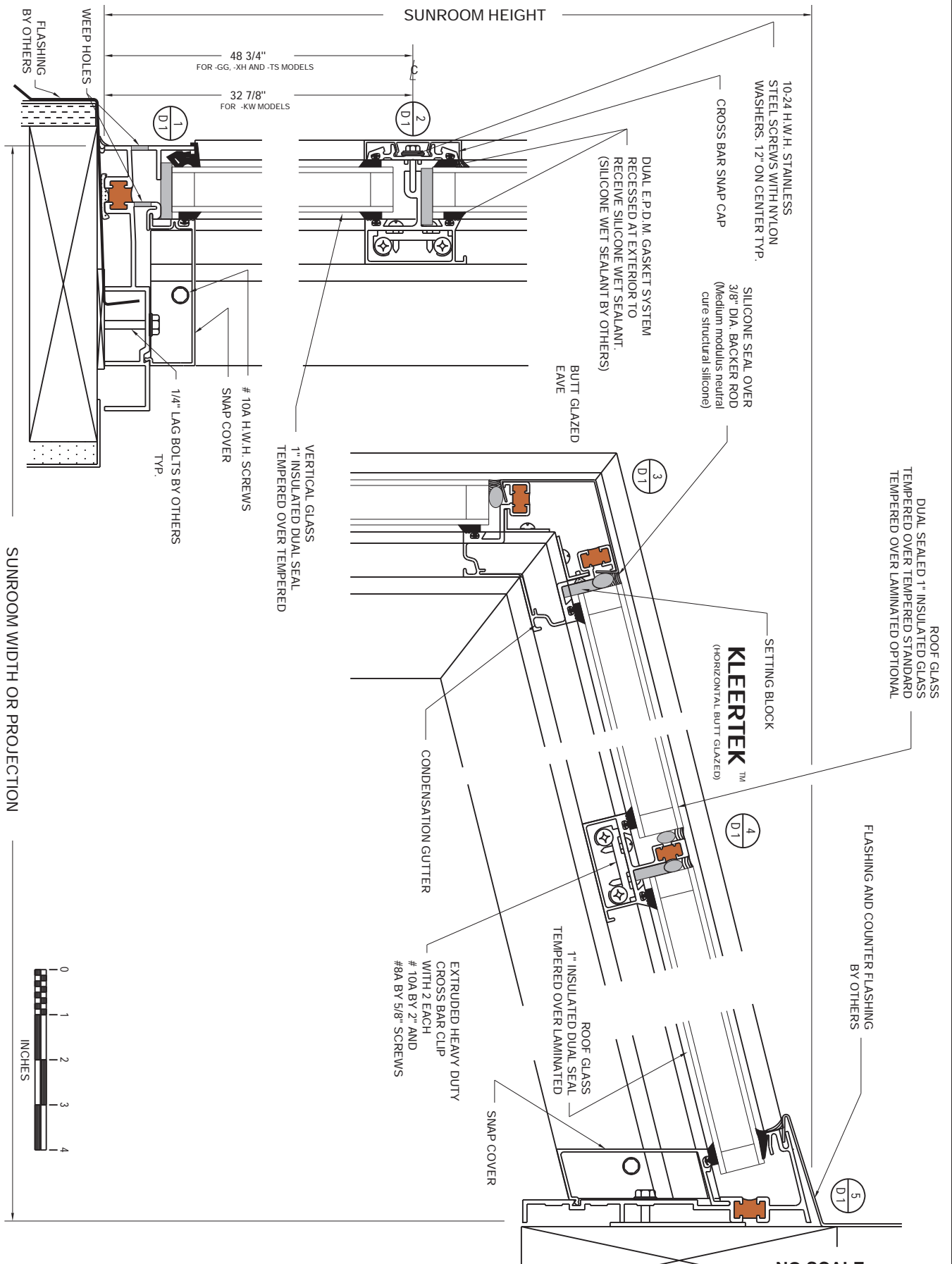


CURVED EAVE

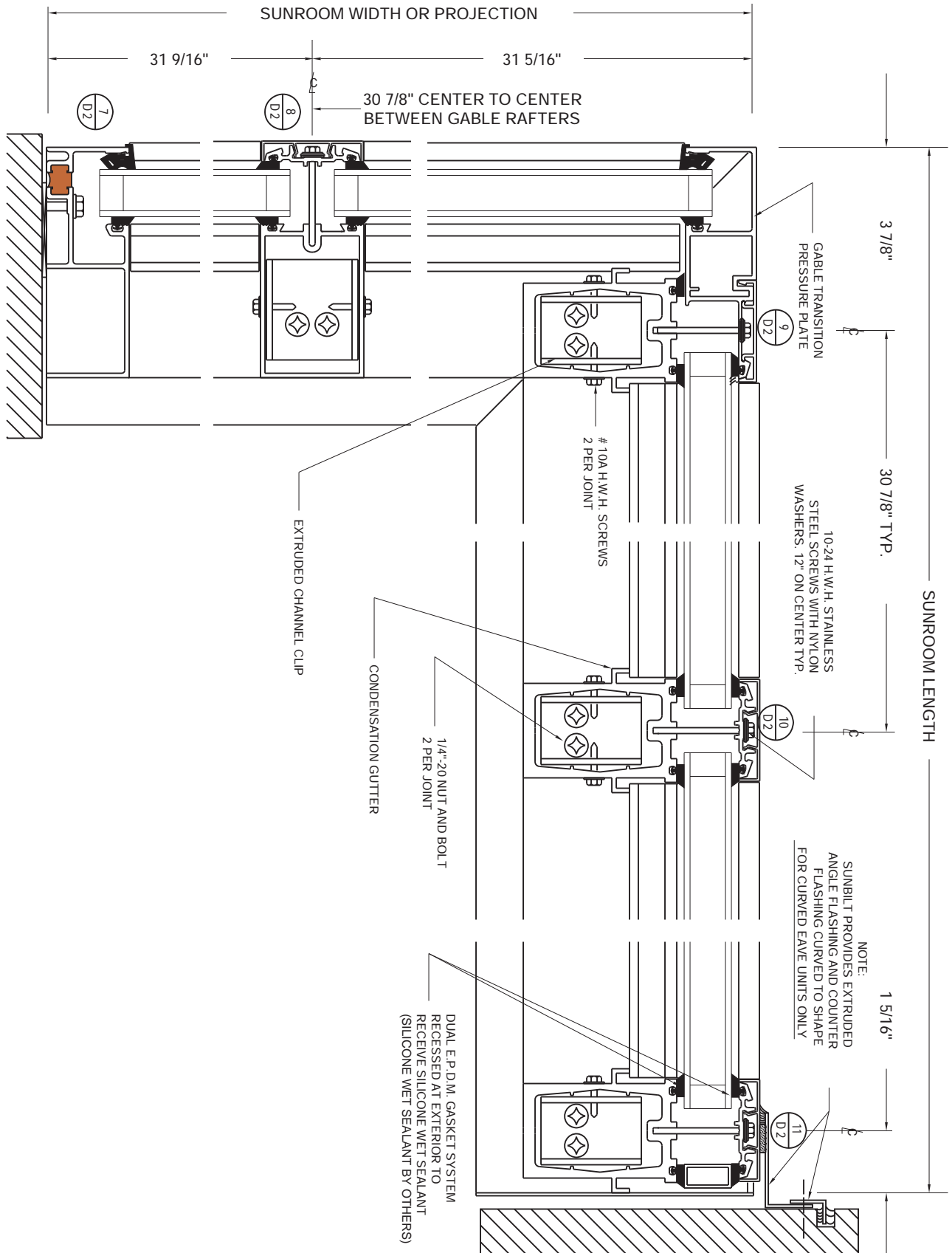


STRAIGHT EAVE

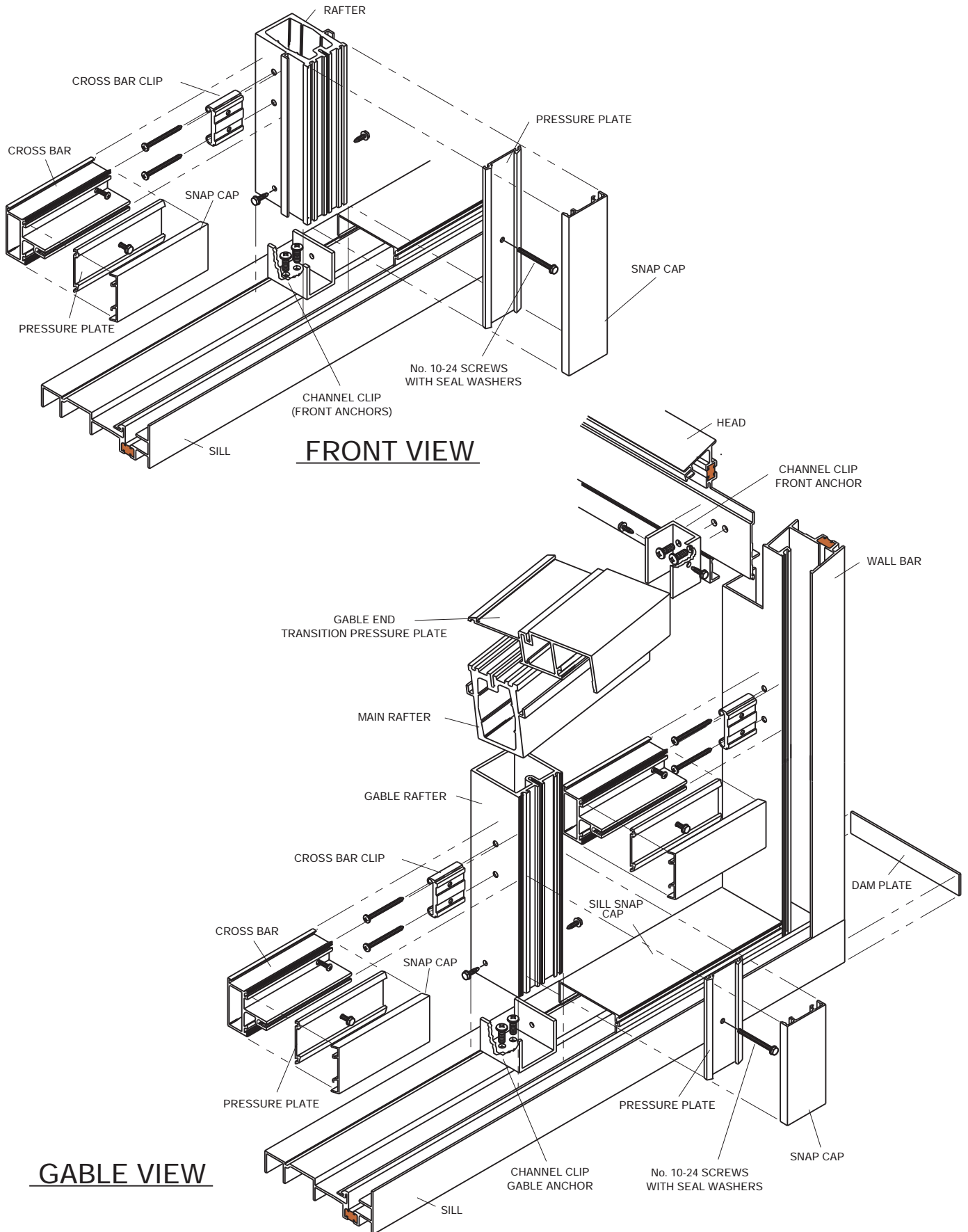
NO SCALE



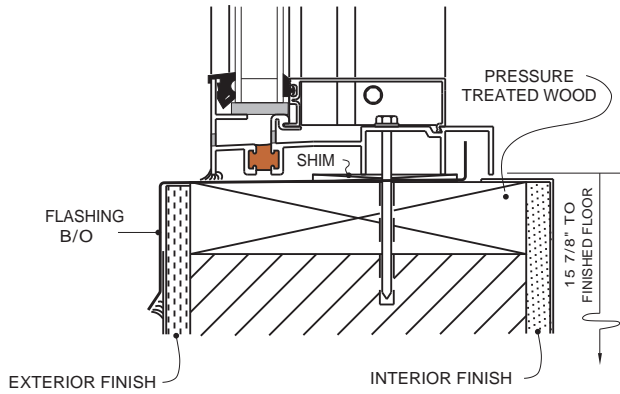
NO SCALE



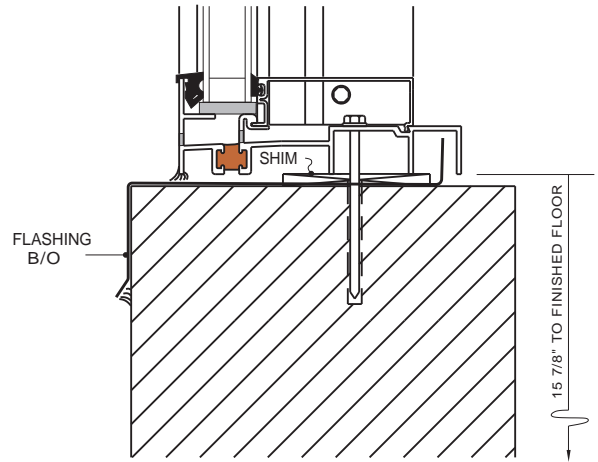
NO SCALE



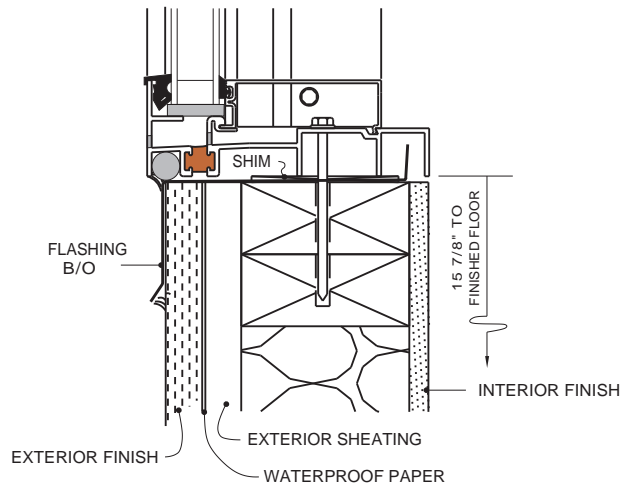
NO SCALE



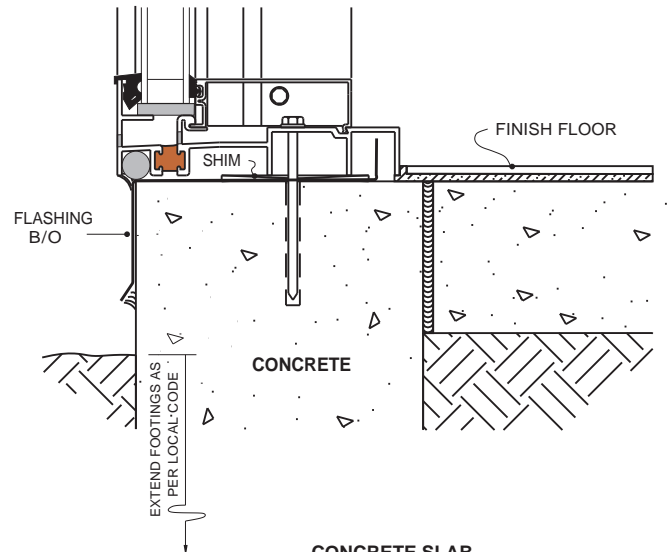
MASONRY KNEEWALL



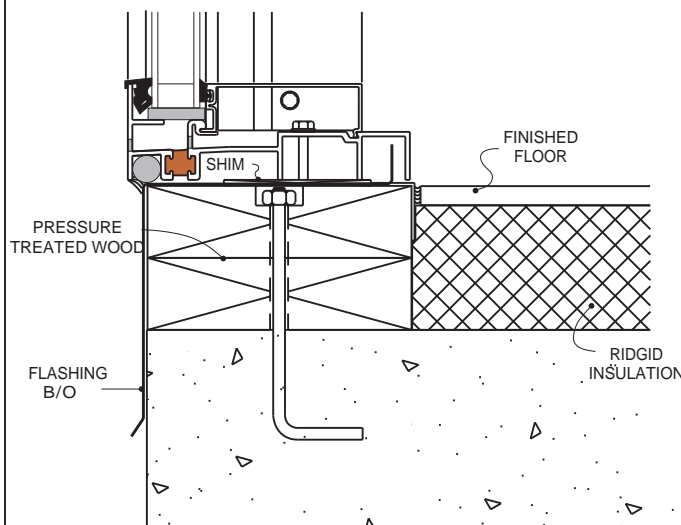
MASONRY KNEEWALL



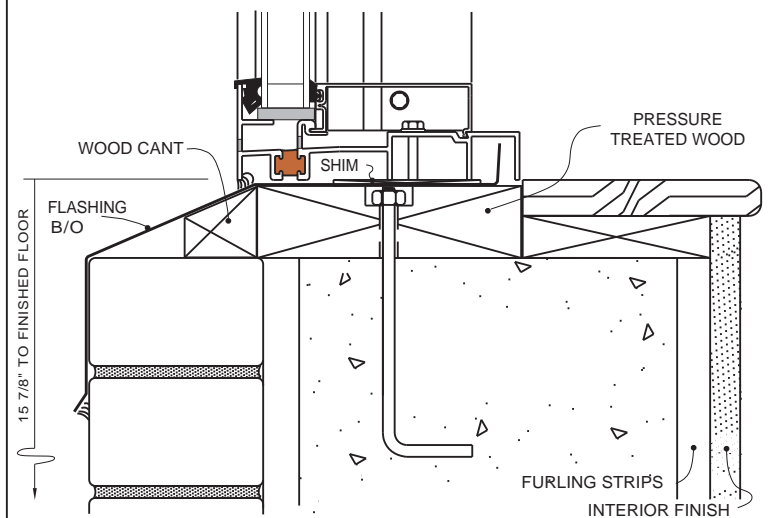
STUDED DRYWALL



CONCRETE SLAB

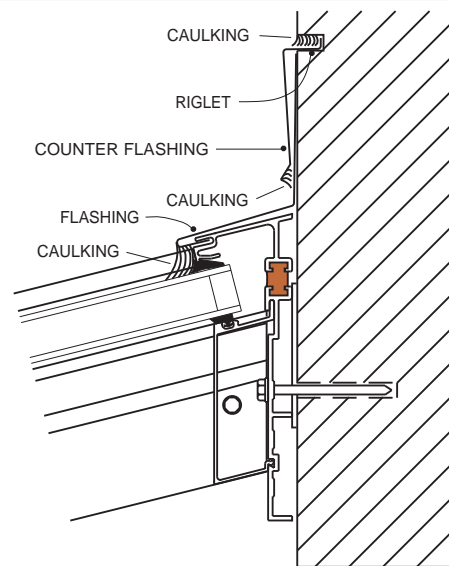
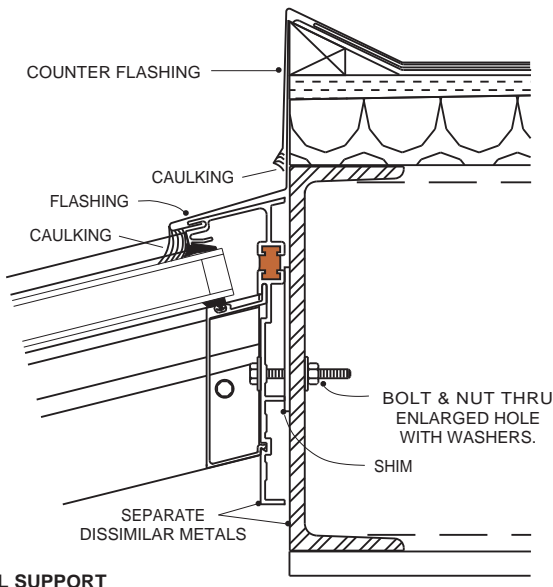
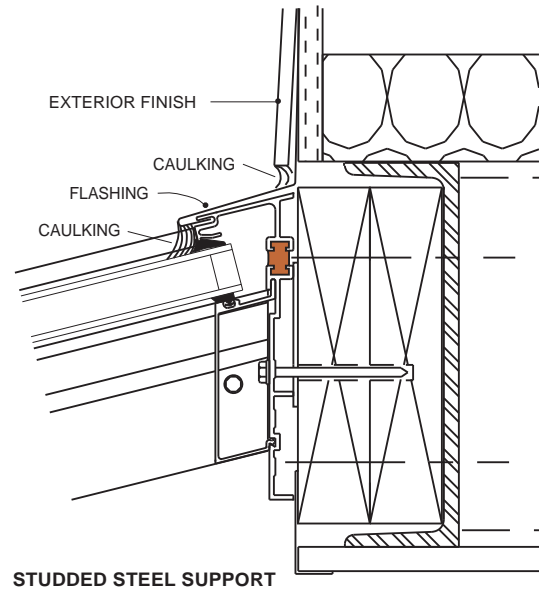
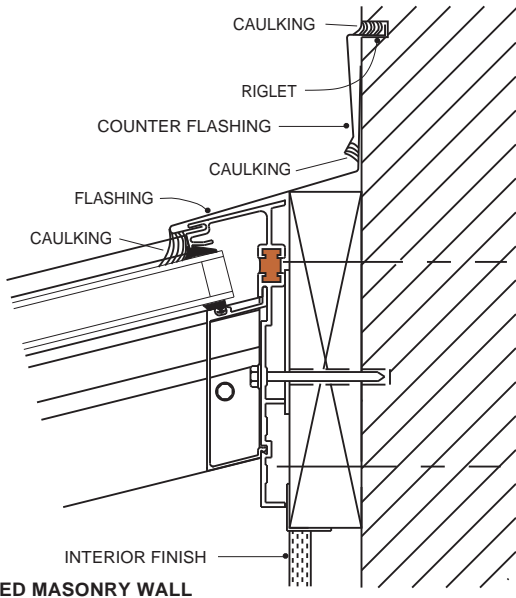
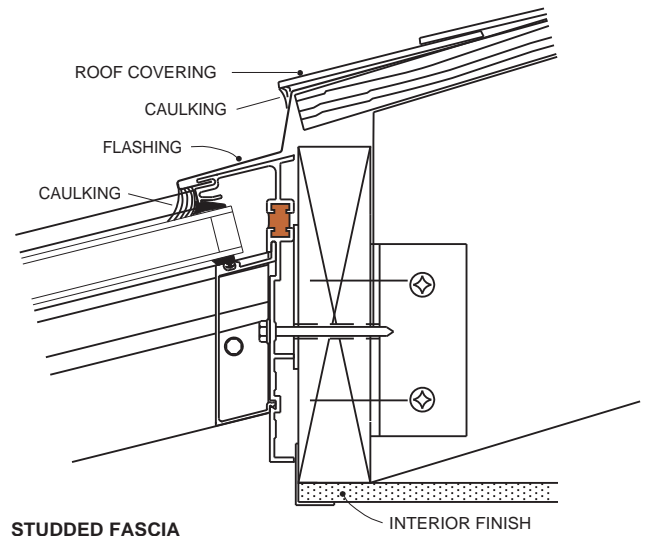
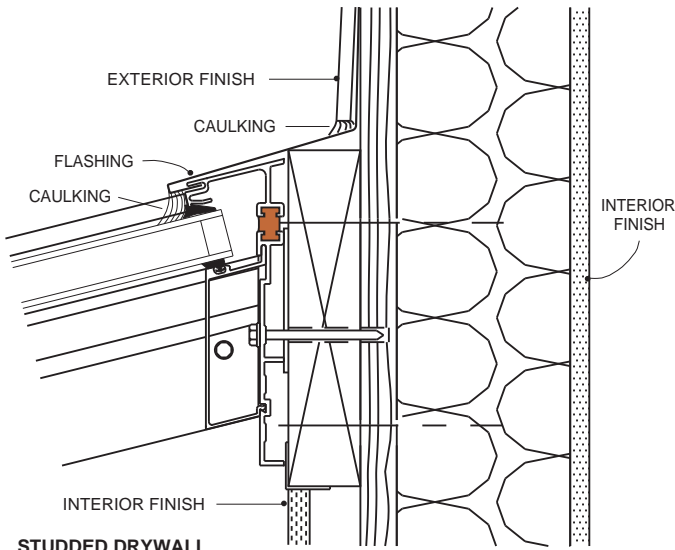


CONCRETE DECK



BRICK & CONCRETE BLOCK WALL

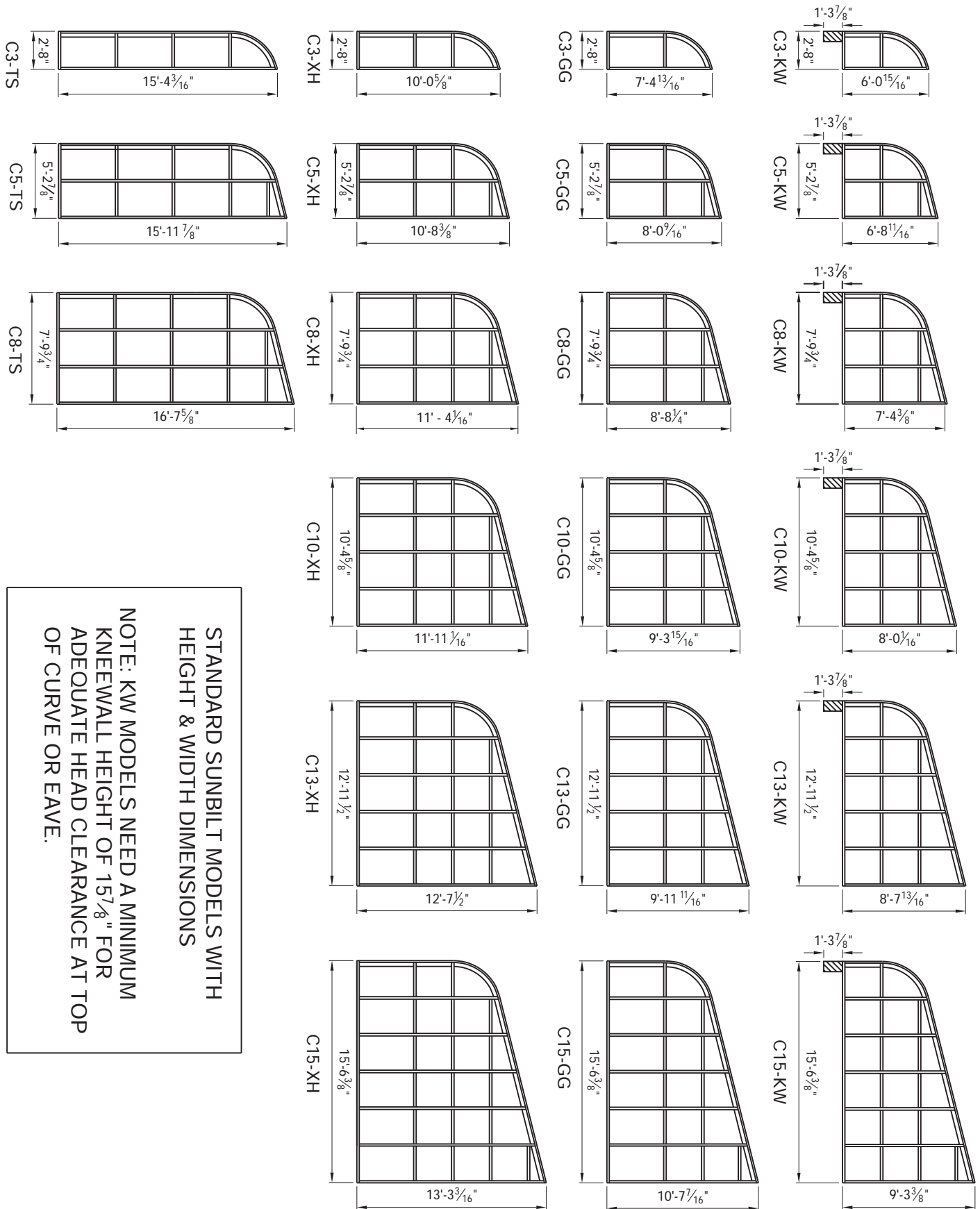
1/4 SIZE DETAILS



STEEL SUPPORT

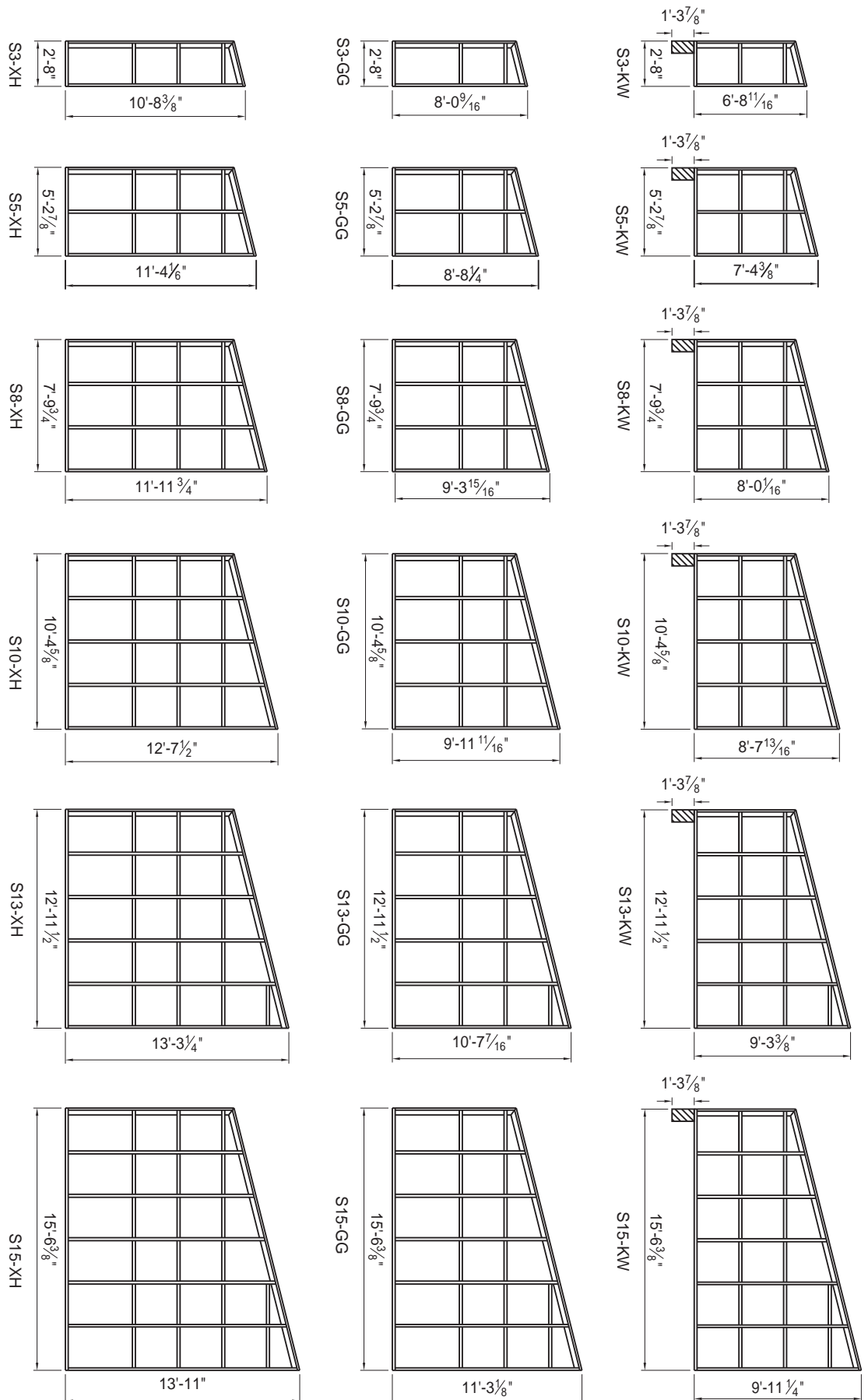
MASONRY WALL

1/4 SIZE DETAILS



STANDARD SUNBILT MODELS WITH HEIGHT & WIDTH DIMENSIONS

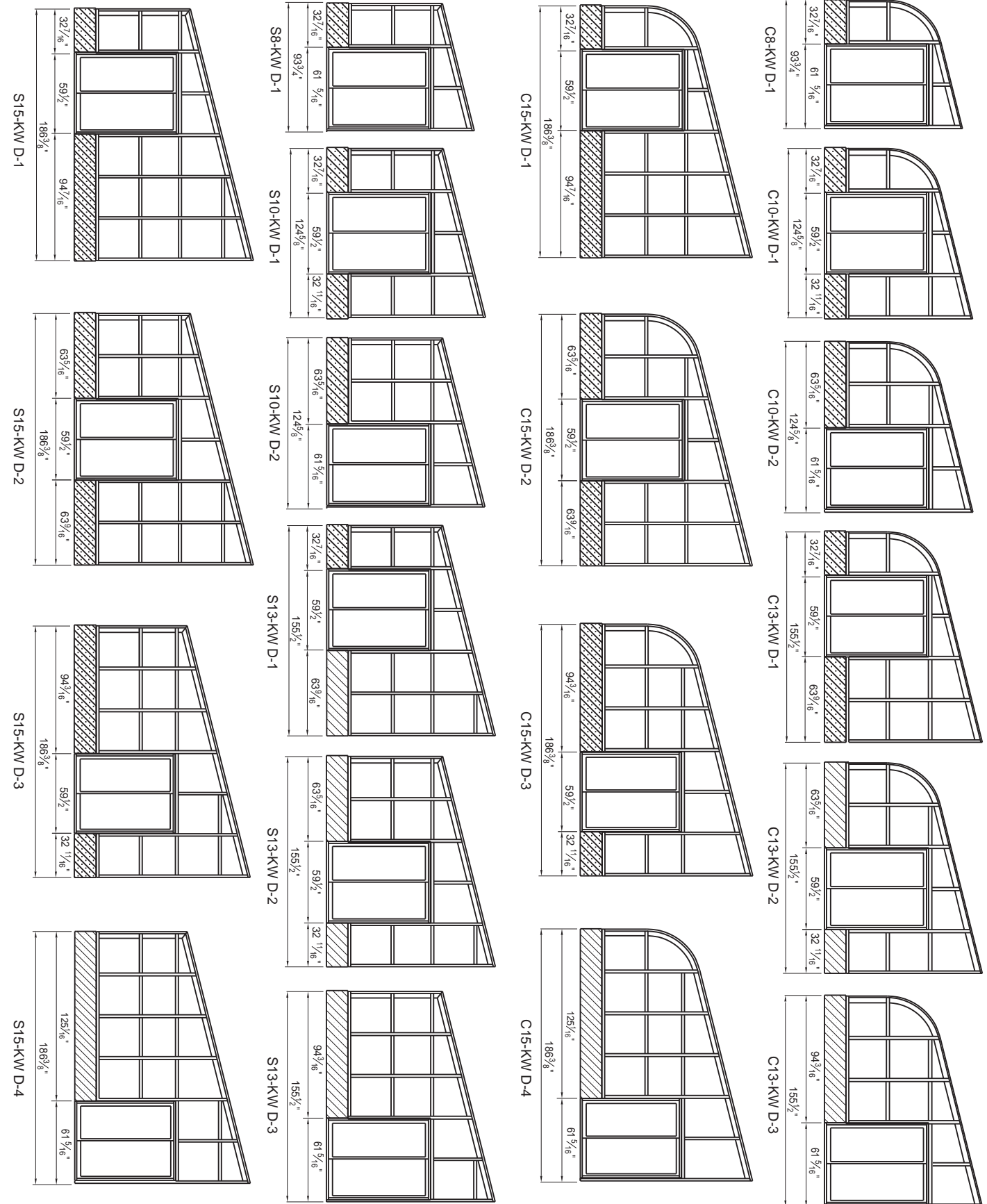
NOTE: KW MODELS NEED A MINIMUM KNEEWALL HEIGHT OF 15⁷/₈" FOR ADEQUATE HEAD CLEARANCE AT TOP OF CURVE OR EAVE.



STANDARD SUNBLIT MODELS WITH HEIGHT & WIDTH DIMENSIONS

NOTE: KW MODELS NEED A MINIMUM KNEEWALL HEIGHT OF 1'-3⁷/₈" FOR ADEQUATE HEAD CLEARANCE AT TOP OF CURVE OR EAVE.

Note: Knee wall height must be 15 7/8". Dimensions shown are to outside of sill, if sill is to be placed in or out from outside of knee wall add or subtract from dimensions given.



NO SCALE



BASE LENGTH SIZES

Creative Sunrooms

Sunbilt Solar Products by Sussman, Inc.

SUNROOM WITH NO GABLES		SUNROOM WITH ONE GABLE (left or right)		SUNROOM WITH TWO GABLES	
No. of Bays	BASE LENGTH	No. of Bays	BASE LENGTH	No. of Bays	BASE LENGTH
3	7' - 11 1/4"	3	8' - 1 13/16"	3	8' - 4 3/8"
4	10' - 6 1/8"	4	10' - 8 11/16"	4	10' - 11 1/4"
5	13' - 1"	5	13' - 3 9/16"	5	13' - 6 1/8"
6	15' - 7 7/8"	6	15' - 10 7/16"	6	16' - 1"
7	18' - 2 3/4"	7	18' - 5 5/16"	7	18' - 7 7/8"
8	20' - 9 5/8"	8	21' - 0 3/16"	8	21' - 2 3/4"
9	23' - 11 3/8"	9	23' - 7 1/16"	9	23' - 9 5/8"
10	25' - 11 3/8"	10	26' - 1 15/16"	10	26' - 4 1/2"
11	28' - 6 1/4"	11	28' - 8 13/16"	11	28' - 11 3/8"
12	31' - 1 1/8"	12	31' - 3 11/16"	12	31' - 6 1/4"
13	33' - 8"	13	33' - 10 9/16"	13	34' - 1 1/16"
14	36' - 2 7/8"	14	36' - 5 7/16"	14	36' - 8"
15	38' - 9 3/4"	15	39' - 0 5/16"	15	39' - 2 7/8"
16	41' - 4 5/8"	16	41' - 7 3/16"	16	41' - 9 3/4"
17	43' - 11 1/2"	17	44' - 2 1/16"	17	44' - 4 5/8"
18	46' - 6 3/8"	18	46' - 8 15/16"	18	46' - 11 1/2"
19	49' - 1 1/4"	19	49' - 3 13/16"	19	49' - 6 3/8"
20	51' - 8 1/8"	20	51' - 10 11/16"	20	52' - 1 1/4"
21	54' - 3"	21	54' - 5 9/16"	21	54' - 8 1/8"
22	56' - 9 7/8"	22	57' - 0 7/16"	22	57' - 3"
23	59' - 4 3/4"	23	59' - 7 5/16"	23	59' - 9 7/8"
24	61' - 11 5/8"	24	62' - 2 3/16"	24	62' - 4 3/4"
25	64' - 6 1/2"	25	64' - 9 1/16"	25	64' - 11 5/8"
26	67' - 1 3/8"	26	67' - 3 15/16"	26	67' - 6 1/2"
27	69' - 8 1/4"	27	69' - 10 13/16"	27	70' - 1 3/8"
28	72' - 3 1/8"	28	72' - 5 11/16"	28	72' - 8 1/4"
29	74' - 10"	29	75' - 0 9/16"	29	75' - 3 1/8"
30	77' - 4 7/8"	30	77' - 7 7/16"	30	77' - 10"
31	79' - 11 3/4"	31	80' - 2 5/16"	31	80' - 4 7/8"
32	82' - 6 5/8"	32	82' - 9 3/16"	32	82' - 11 3/4"
33	85' - 1 1/2"	33	85' - 4 1/16"	33	85' - 6 5/8"
34	87' - 8 3/8"	34	87' - 10 15/16"	34	88' - 1 1/2"
35	90' - 3 1/4"	35	90' - 5 13/16"	35	90' - 8 3/8"
36	92' - 10 1/8"	36	93' - 0 11/16"	36	93' - 3 1/4"
37	95' - 5"	37	95' - 7 9/16"	37	95' - 10 1/8"
38	97' - 11 7/8"	38	98' - 2 1/16"	38	98' - 5"
39	100' - 6 3/4"	39	100' - 9 5/16"	39	100' - 11 7/8"
40	103' - 1 5/8"	40	103' - 4 3/16"	40	103' - 6 3/4"

NOTE: FOR SIZES OVER 40 BAYS IN LENGTH ADD 2' - 6 7/8" PER ADDITIONAL BAY, TO ABOVE 40 BAY DIMENSIONS

No. of BAYS	3 ft. Models		
	A	B	C
2	5'-4 11/16"	5'-7 1/4"	N/A
3	7'-11 9/16"	8'-2 1/8"	7'-11 7/8"
4	10'-6 7/16"	10'-9"	10'-6 3/4"
5	13'-1 5/16"	13'-3 7/8"	13'-1 5/8"
6	15'-8 3/16"	15'-10 3/4"	15'-8 1/2"
7	18'-3 1/16"	18'-5 5/8"	18'-3 3/8"
8	20'-9 15/16"	21'-0 1/2"	20'-10 1/4"
9	23'-4 13/16"	23'-7 3/8"	23'-5 1/8"
10	25'-11 11/16"	26'-2 1/4"	26'-0"
11	28'-6 9/16"	28'-9 1/8"	28'-6 7/8"
12	31'-1 7/16"	31'-4"	31'-1 3/4"

No. of BAYS	5 ft. Models		
	A	B	C
2	N/A	N/A	N/A
3	7'-11 9/16"	8'-2 1/8"	N/A
4	10'-6 7/16"	10'-9"	N/A
5	13'-1 5/16"	13'-3 7/8"	13'-1 5/8"
6	15'-8 3/16"	15'-10 3/4"	15'-8 1/2"
7	18'-3 1/16"	18'-5 5/8"	18'-3 3/8"
8	20'-9 15/16"	21'-0 1/2"	20'-10 1/4"
9	23'-4 13/16"	23'-7 3/8"	23'-5 1/8"
10	25'-11 11/16"	26'-2 1/4"	26'-0"
11	28'-6 9/16"	28'-9 1/8"	28'-6 7/8"
12	31'-1 7/16"	31'-4"	31'-1 3/4"

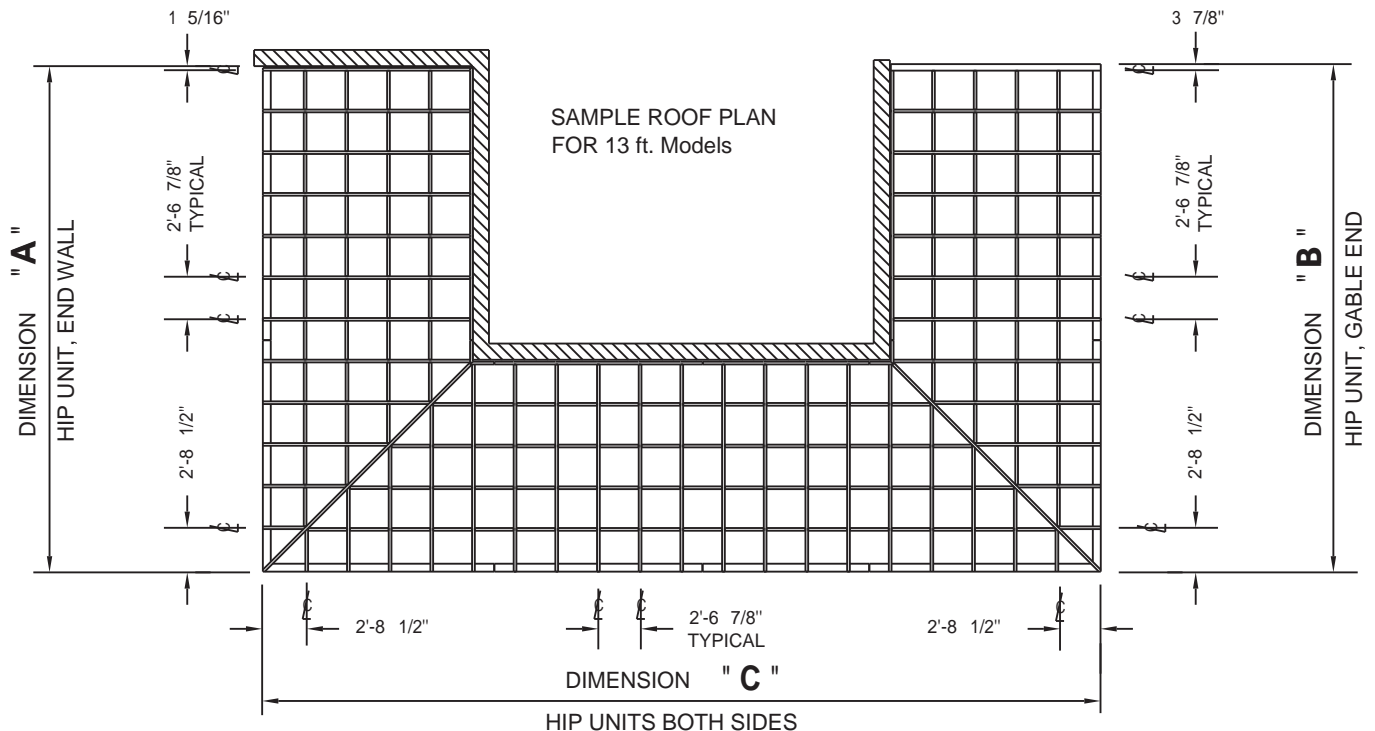
No. of BAYS	8 ft. Models		
	A	B	C
2	N/A	N/A	N/A
3	N/A	N/A	N/A
4	10'-6 7/16"	10'-9"	N/A
5	13'-1 5/16"	13'-3 7/8"	N/A
6	15'-8 3/16"	15'-10 3/4"	N/A
7	18'-3 1/16"	18'-5 5/8"	18'-3 3/8"
8	20'-9 15/16"	21'-0 1/2"	20'-10 1/4"
9	23'-4 13/16"	23'-7 3/8"	23'-5 1/8"
10	25'-11 11/16"	26'-2 1/4"	26'-0"
11	28'-6 9/16"	28'-9 1/8"	28'-6 7/8"
12	31'-1 7/16"	31'-4"	31'-1 3/4"

No. of BAYS	10 ft. Models		
	A	B	C
2	N/A	N/A	N/A
3	N/A	N/A	N/A
4	N/A	N/A	N/A
5	13'-1 5/16"	13'-3 7/8"	N/A
6	15'-8 3/16"	15'-10 3/4"	N/A
7	18'-3 1/16"	18'-5 5/8"	N/A
8	20'-9 15/16"	21'-0 1/2"	N/A
9	23'-4 13/16"	23'-7 3/8"	23'-5 1/8"
10	25'-11 11/16"	26'-2 1/4"	26'-0"
11	28'-6 9/16"	28'-9 1/8"	28'-6 7/8"
12	31'-1 7/16"	31'-4"	31'-1 3/4"

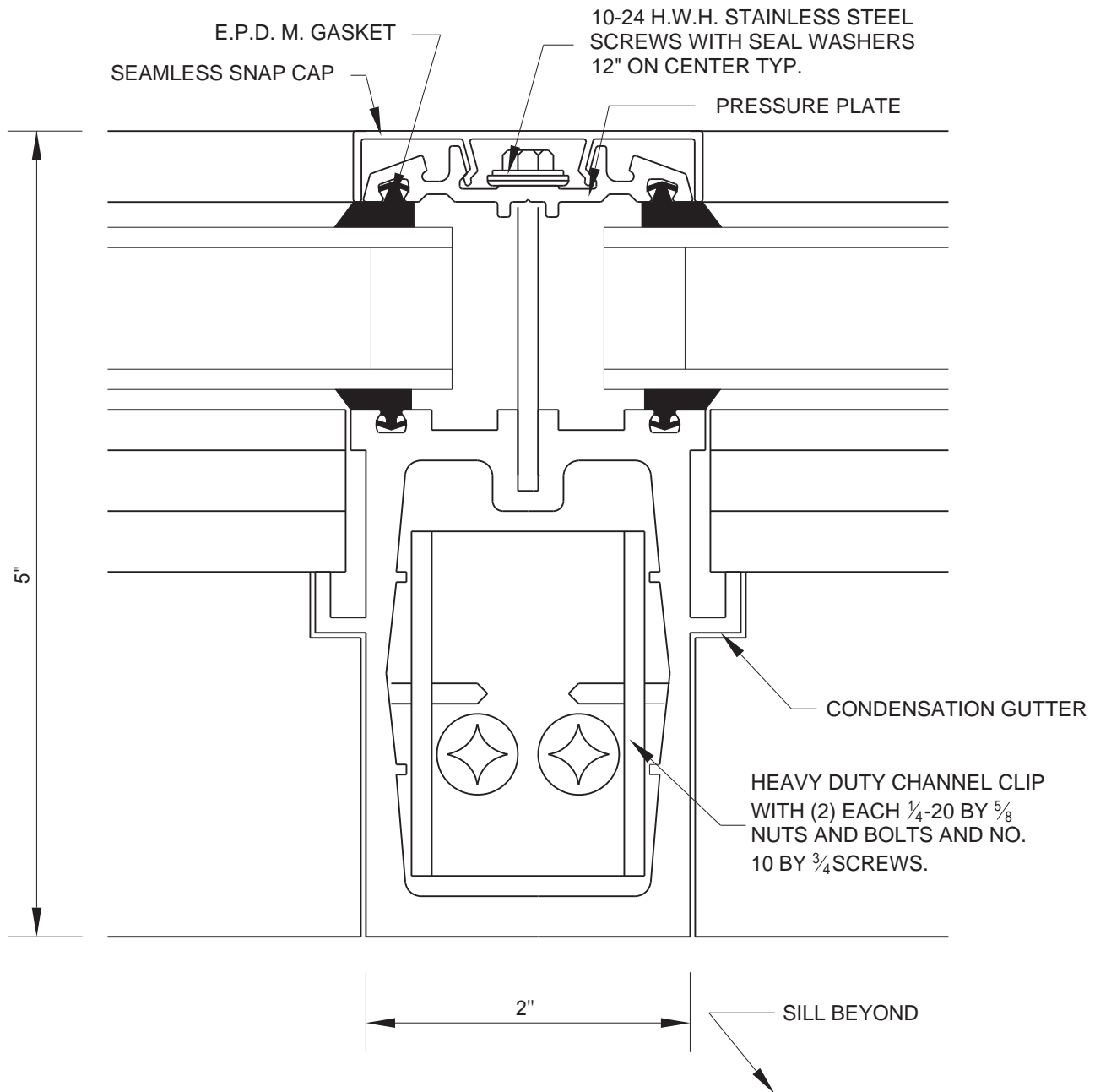
No. of BAYS	13 ft. Models		
	A	B	C
2	N/A	N/A	N/A
3	N/A	N/A	N/A
4	N/A	N/A	N/A
5	N/A	N/A	N/A
6	15'-8 3/16"	15'-10 3/4"	N/A
7	18'-3 1/16"	18'-5 5/8"	N/A
8	20'-9 15/16"	21'-0 1/2"	N/A
9	23'-4 13/16"	23'-7 3/8"	N/A
10	25'-11 11/16"	26'-2 1/4"	N/A
11	28'-6 9/16"	28'-9 1/8"	28'-6 7/8"
12	31'-1 7/16"	31'-4"	31'-1 3/4"

No. of BAYS	15 ft. Models		
	A	B	C
2	N/A	N/A	N/A
3	N/A	N/A	N/A
4	N/A	N/A	N/A
5	N/A	N/A	N/A
6	N/A	N/A	N/A
7	18'-3 1/16"	18'-5 5/8"	N/A
8	20'-9 15/16"	21'-0 1/2"	N/A
9	23'-4 13/16"	23'-7 3/8"	N/A
10	25'-11 11/16"	26'-2 1/4"	N/A
11	28'-6 9/16"	28'-9 1/8"	N/A
12	31'-1 7/16"	31'-4"	N/A

FOR DIMENSIONS OVER 12 BAYS ADD 2'-6 7/8" TO ABOVE 12 BAY DIMENSION FOR EACH BAY ADDED



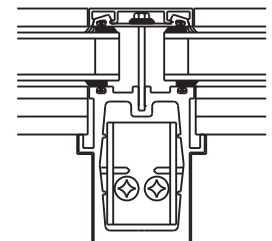
NO SCALE



MAIN RAFTER (UP-TO 13 FT. MODELS)

First and foremost the rafter must be strong enough to support the wind load and additional live and dead loads required of a sloped glazed system. Excessive deflection of the main rafter can cause glass breakage, water leakage and sealant failure of the insulated glass. The maximum deflection allowed for the Sunbilt rafter is L/175 of the entire span of the rafter. This is not to be confused with L/175 of the relative midpoint of the glass. While the latter standards will usually minimize glass breakage, it in no way accounts for water leakage and sealant failure as do the more stringent former requirements.

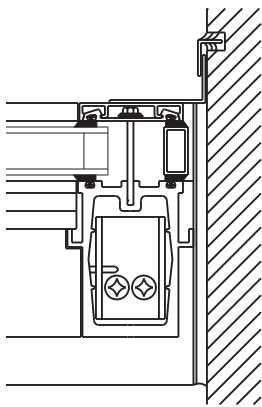
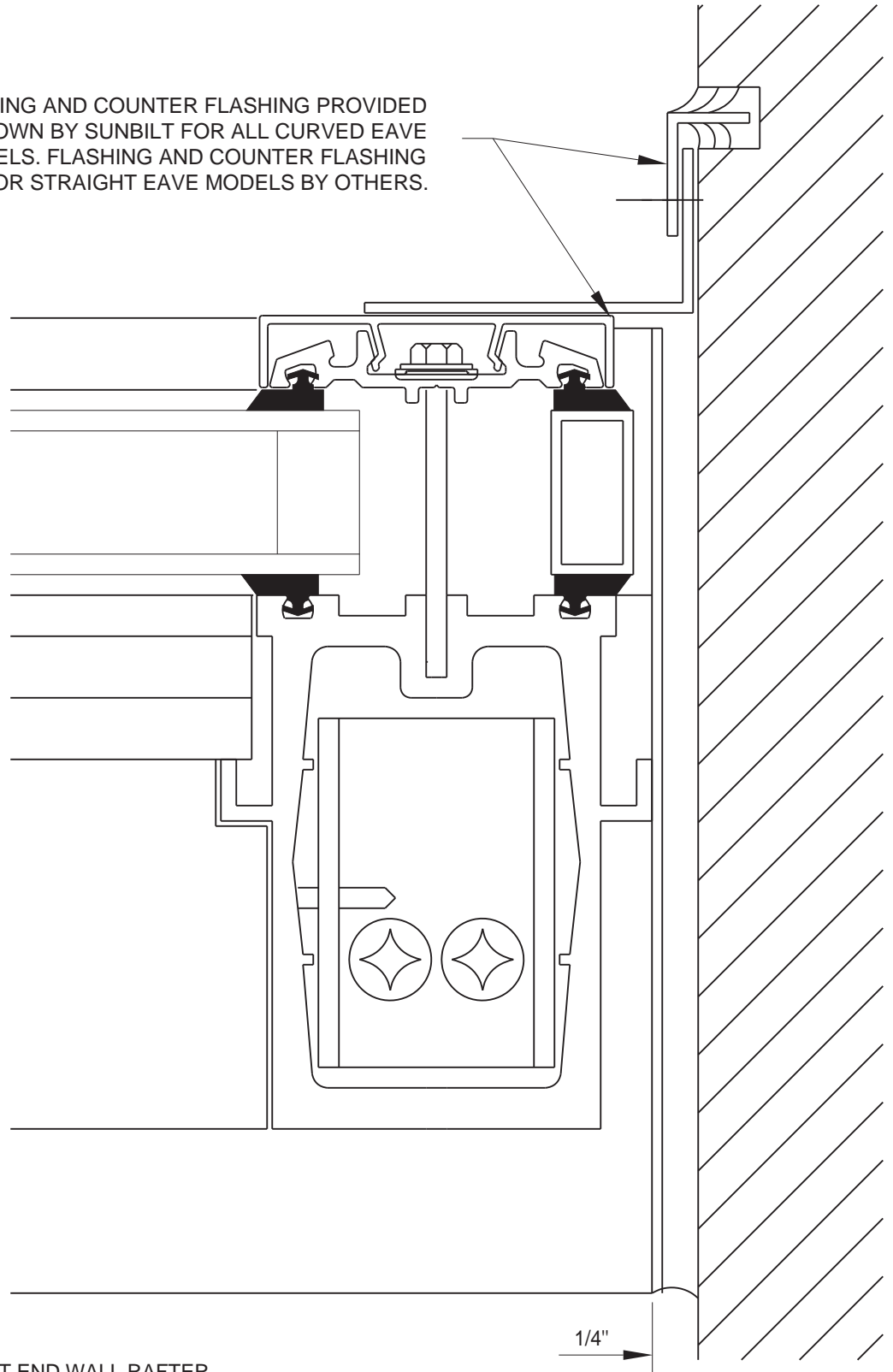
Assurance of weather tightness and minimal stress on the insulated glass is provided by proper glass cushioning (1/2") and clearance space between glass and metal (Minimum of 1/8" with 20% compression of gaskets). In addition, proper edge clearance of glass minimizes potential glass damage and proper glass bite prevents ultraviolet degradation of the sealant and glass spacers. Although condensation is minimized due to a completely thermally broken framework, it cannot be totally eliminated if there is excessive humidity in the air. Condensation gutters provide a necessary backup to any sloped glazed system. Rafters are supported by anchor clips at head and sill with nuts and bolts to prevent undue stress from negative windloading.



1/4 SIZE DETAIL

FULL SIZE DETAIL

FLASHING AND COUNTER FLASHING PROVIDED AS SHOWN BY SUNBILT FOR ALL CURVED EAVE MODELS. FLASHING AND COUNTER FLASHING FOR STRAIGHT EAVE MODELS BY OTHERS.

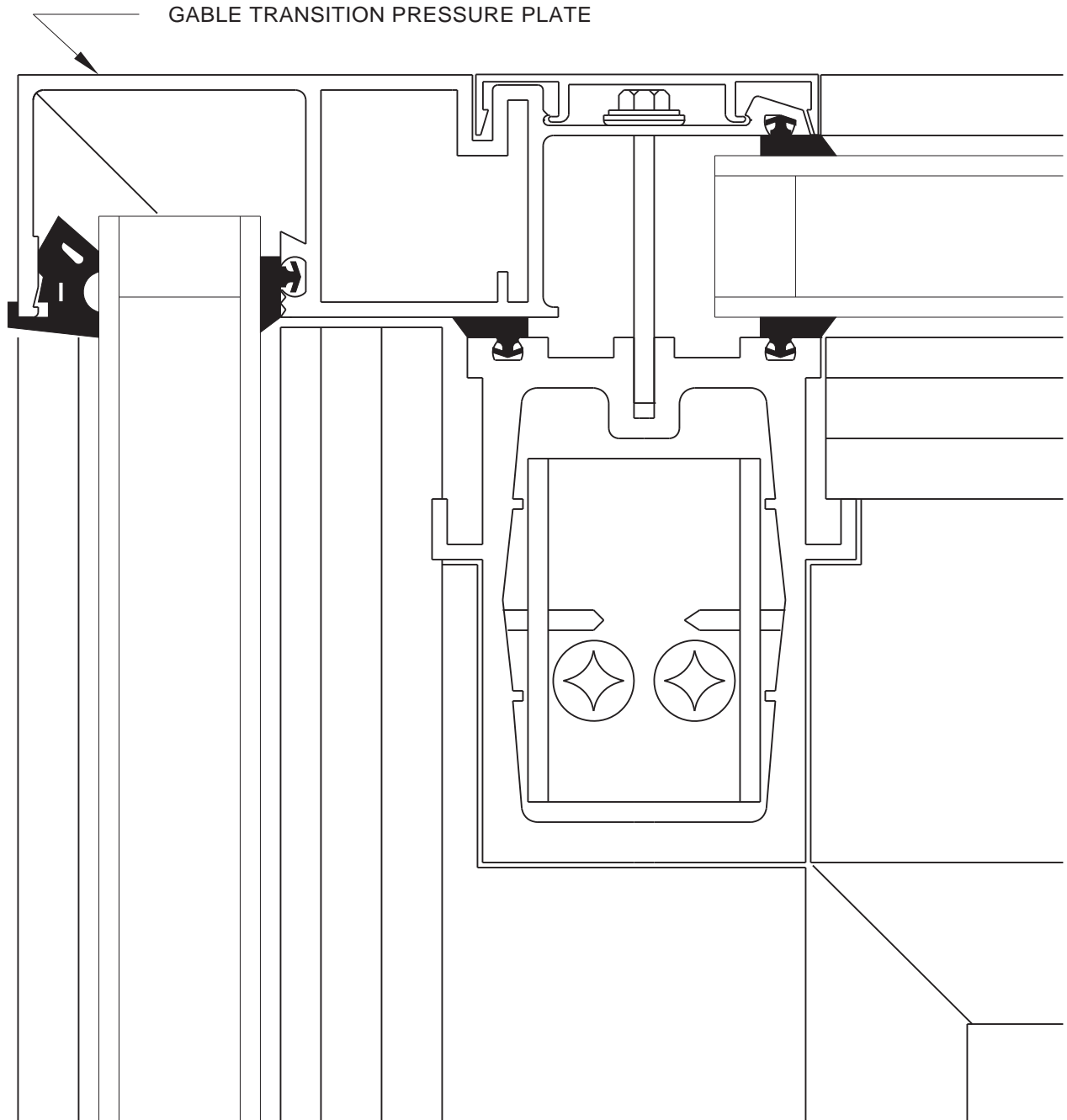


1/4 SIZE DETAIL

LEFT END WALL RAFTER

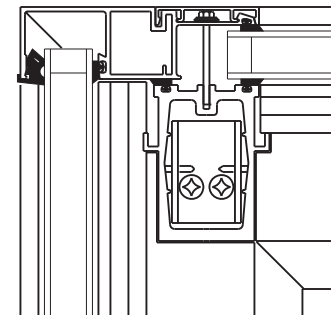
A critical part of the wall rafter is proper clearance space & flashing to compensate for the difference in material movement. A minimum of 1/4" clearance per end wall should be accounted for. Curved flashing & counter-flashing is provided by SUNBILT to assure maximum weather-tightness in this critical area & to maintain a neat appearance.

FULL SIZE DETAIL



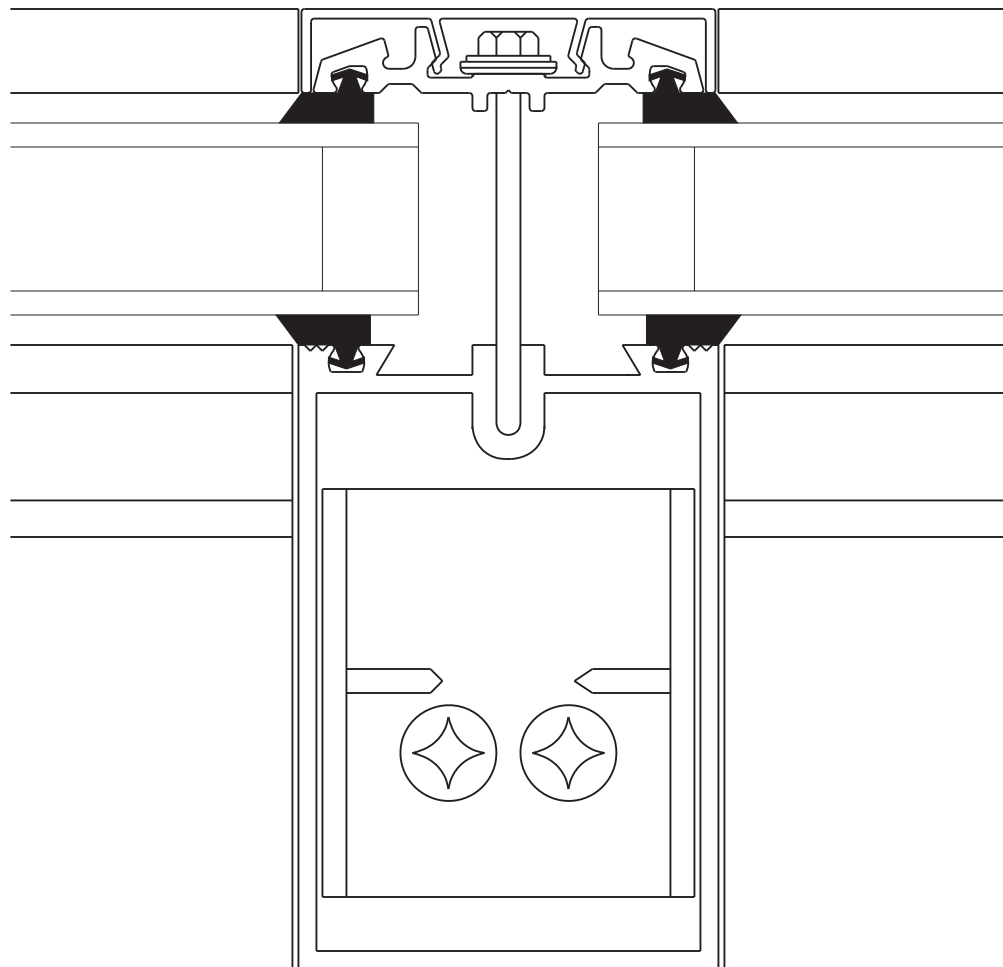
RIGHT GLAZED END RAFTER

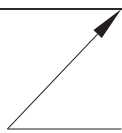
It is important that the glazed end provide a neat and harmonious transition from the front of the sunroom and around to the gable end. Aesthetic details are important here and seams, splice joints and exposed fasteners are AVOIDED.



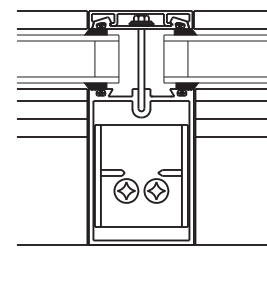
1/4 SIZE DETAIL

FULL SIZE DETAIL

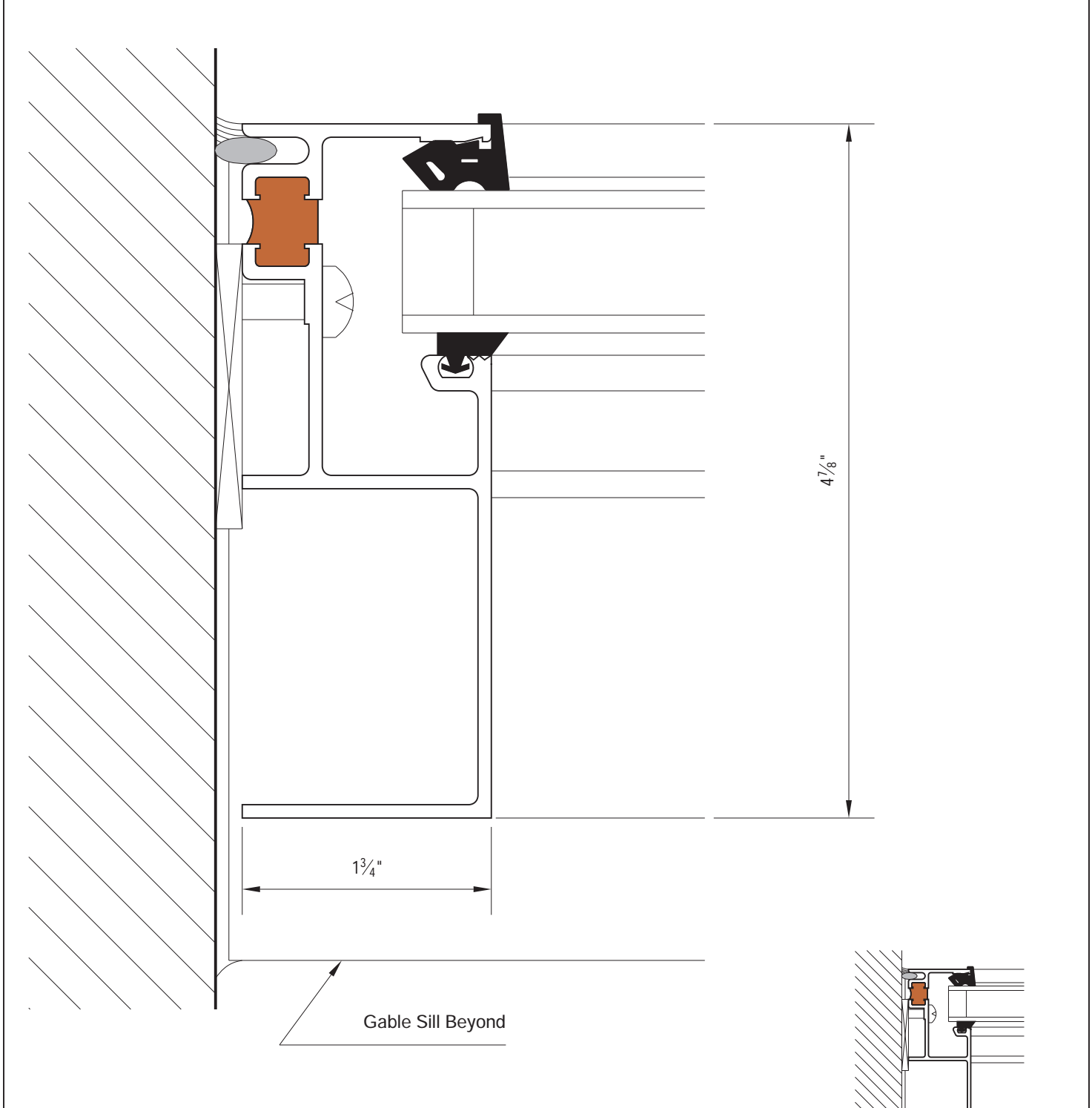



GABLE SILL BEYOND

GABLE RAFTER The gable rafter must adequately support necessary windloads. It is notched out on top to give the gable end a neat finished appearance. All gable rafters are designed to line up with overhead cross bars.

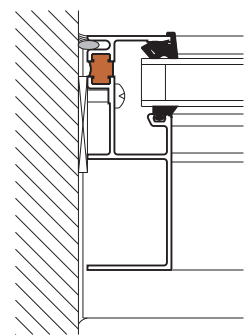


1/4 SIZE DETAIL

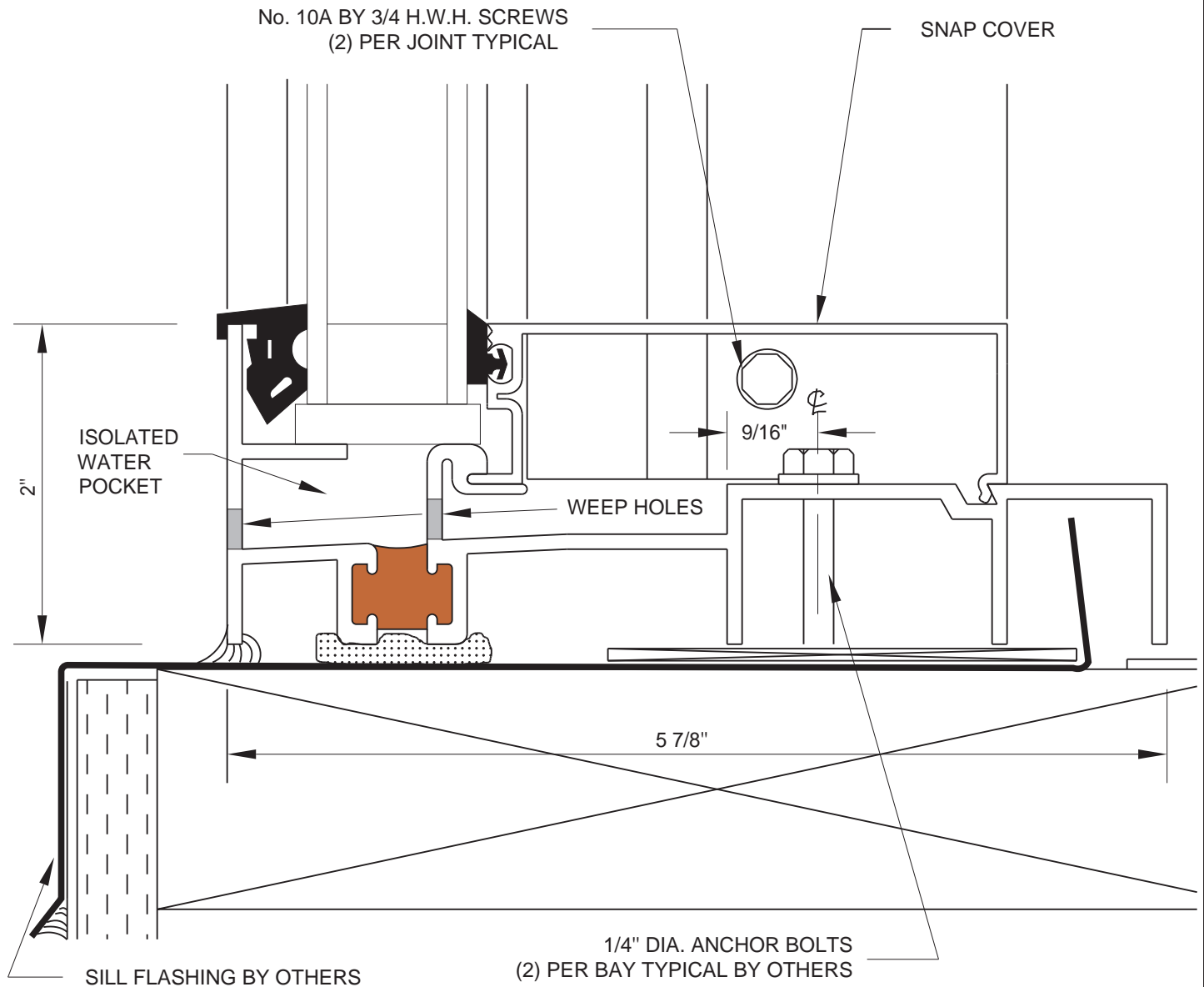


GABLE WALL BAR (Right gable shown)

The wall bar is tied in at the gable end to the wall. It lines up neatly with the gable rafter and is notched at top for a neat finished appearance. It is important to shim and caulk the wall bar to eliminate air and water infiltration. Fasteners are concealed within the channel of the wall bar.

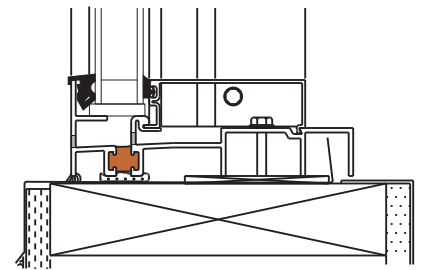


1/4 SIZE DETAIL



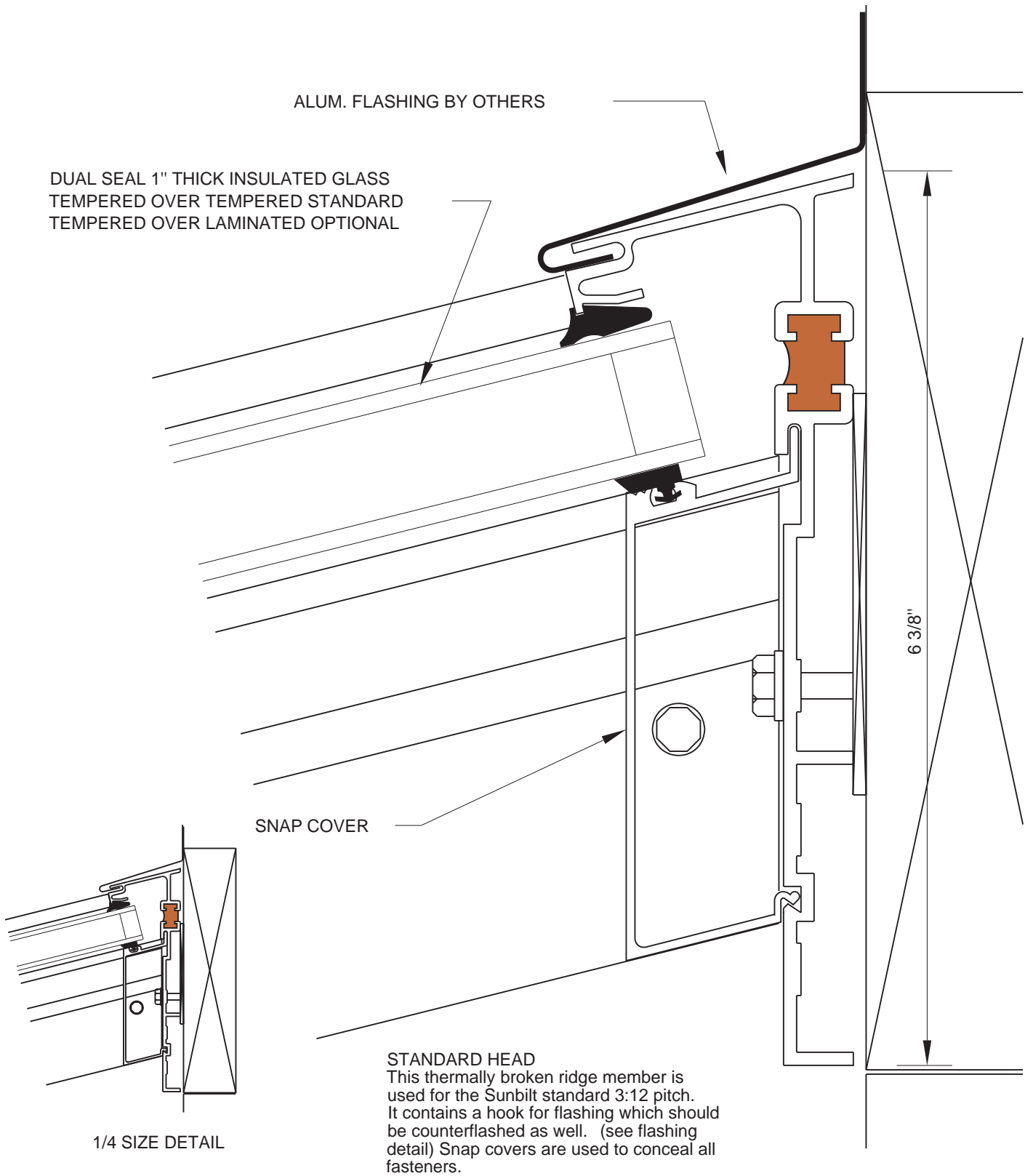
STANDARD SILL

The sill must act as a receptor for all internal drainage before it is weeped to the exterior, as well as a mediator to properly transfer all design loads to the resting surface of the sunroom. The isolated water pocket prevents any water from ever resting directly under the glass. Proper leverage is accounted for by placement of anchor bolts, in an area other than the main drainage gutter, so as not to cause any lifting of the sill. Snap covers are provided to conceal all fasteners. "Z" flashing is tucked under the sill without crossing the polyurathane thermal barrier and thereby causing a short circuit. Sills are also mitred at corners rather than butted to maintain the thermal break and to give the unit a neat finished appearance. Built in expansion joints are provided every 15 lineal feet of sill to account for excessive movement between materials.



1/4 SIZE DETAIL

FULL SIZE DETAIL



DUAL SEAL 1" THICK INSULATED GLASS
 TEMPERED OVER TEMPERED STANDARD
 TEMPERED OVER LAMINATED OPTIONAL

ALUM. FLASHING BY OTHERS

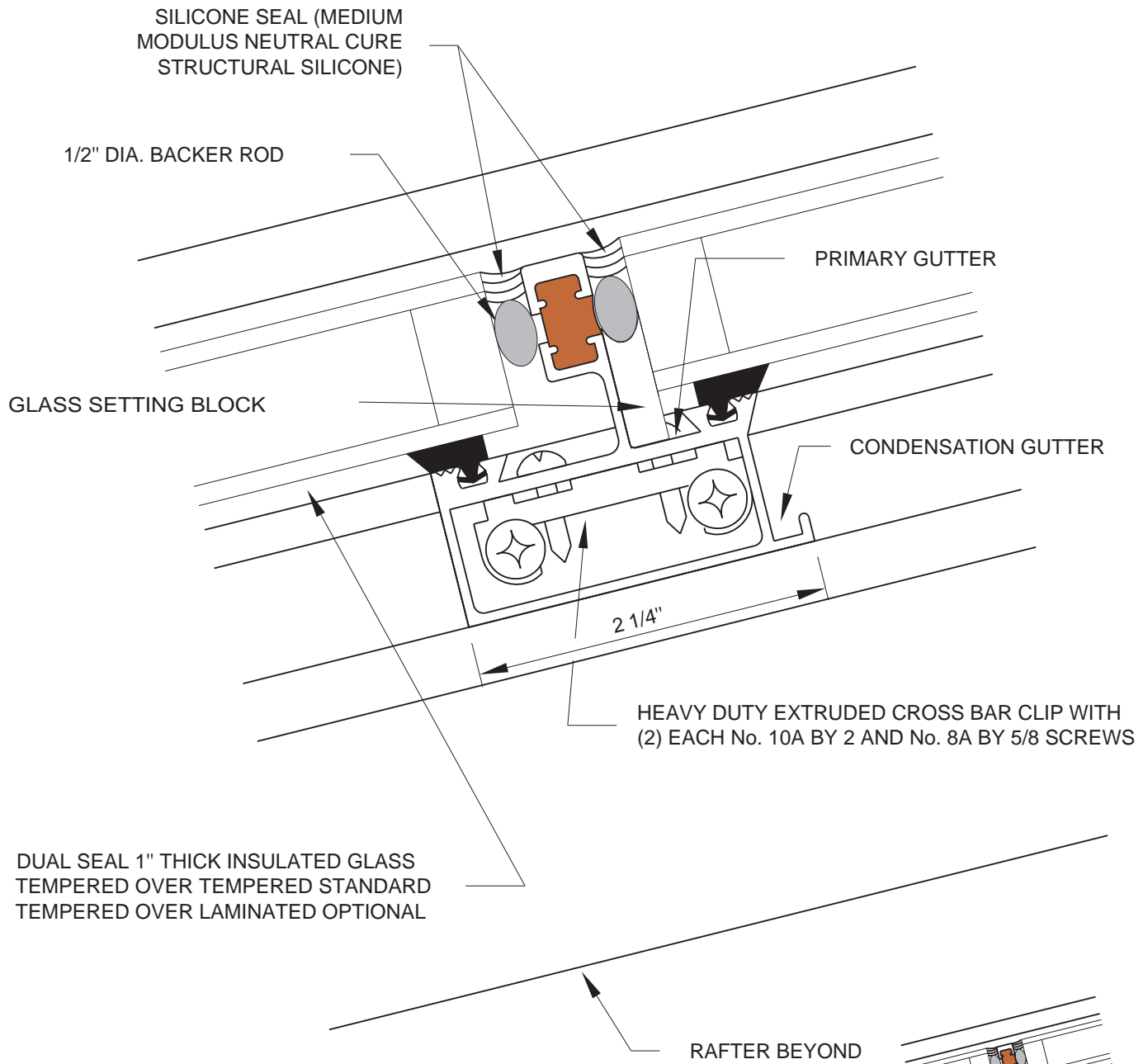
SNAP COVER

6 3/8"

1/4 SIZE DETAIL

STANDARD HEAD
 This thermally broken ridge member is used for the Sunbilt standard 3:12 pitch. It contains a hook for flashing which should be counterflashed as well. (see flashing detail) Snap covers are used to conceal all fasteners.

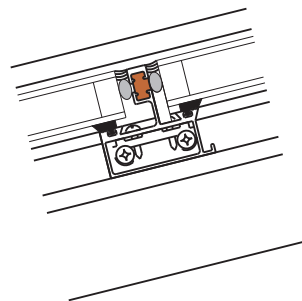
FULL SIZE DETAIL



DUAL SEAL 1" THICK INSULATED GLASS
TEMPERED OVER TEMPERED STANDARD
TEMPERED OVER LAMINATED OPTIONAL

HEAVY DUTY EXTRUDED CROSS BAR CLIP WITH
(2) EACH No. 10A BY 2 AND No. 8A BY 5/8 SCREWS

RAFTER BEYOND

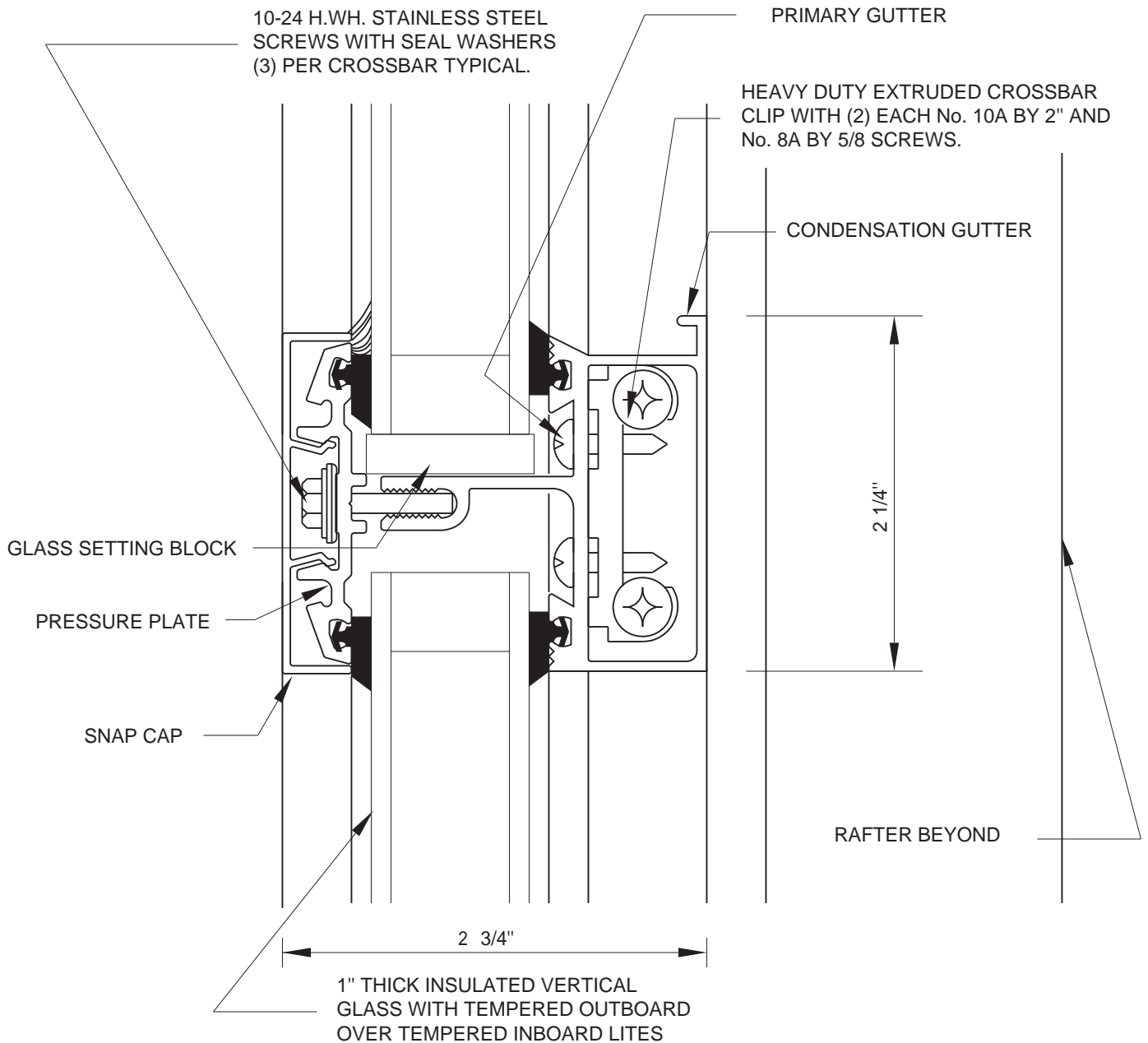


1/4 SIZE DETAIL

BUTT GLAZED CROSS BAR (KLEERTEK™)

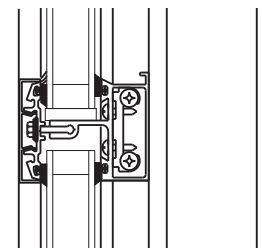
Aesthetically this offers the exterior a crystalline appearance of one sheet of glass from top to bottom of the sunroom. Its superior performance results from the total elimination of all horizontal protruding surfaces. This is particularly important in the roof area where water and dirt can accumulate above exterior caps. Thermal efficiency is also improved due to a minimal exterior exposed metal surface. All glass utilized with this system must contain a primary seal of polyisobutylene with a secondary seal of silicone. This is specified in order to be compatible with the outside silicone weather seal.

Because of aesthetics and superior performance, this system is standard for overhead glazing. It is available as an option for vertical glazing.



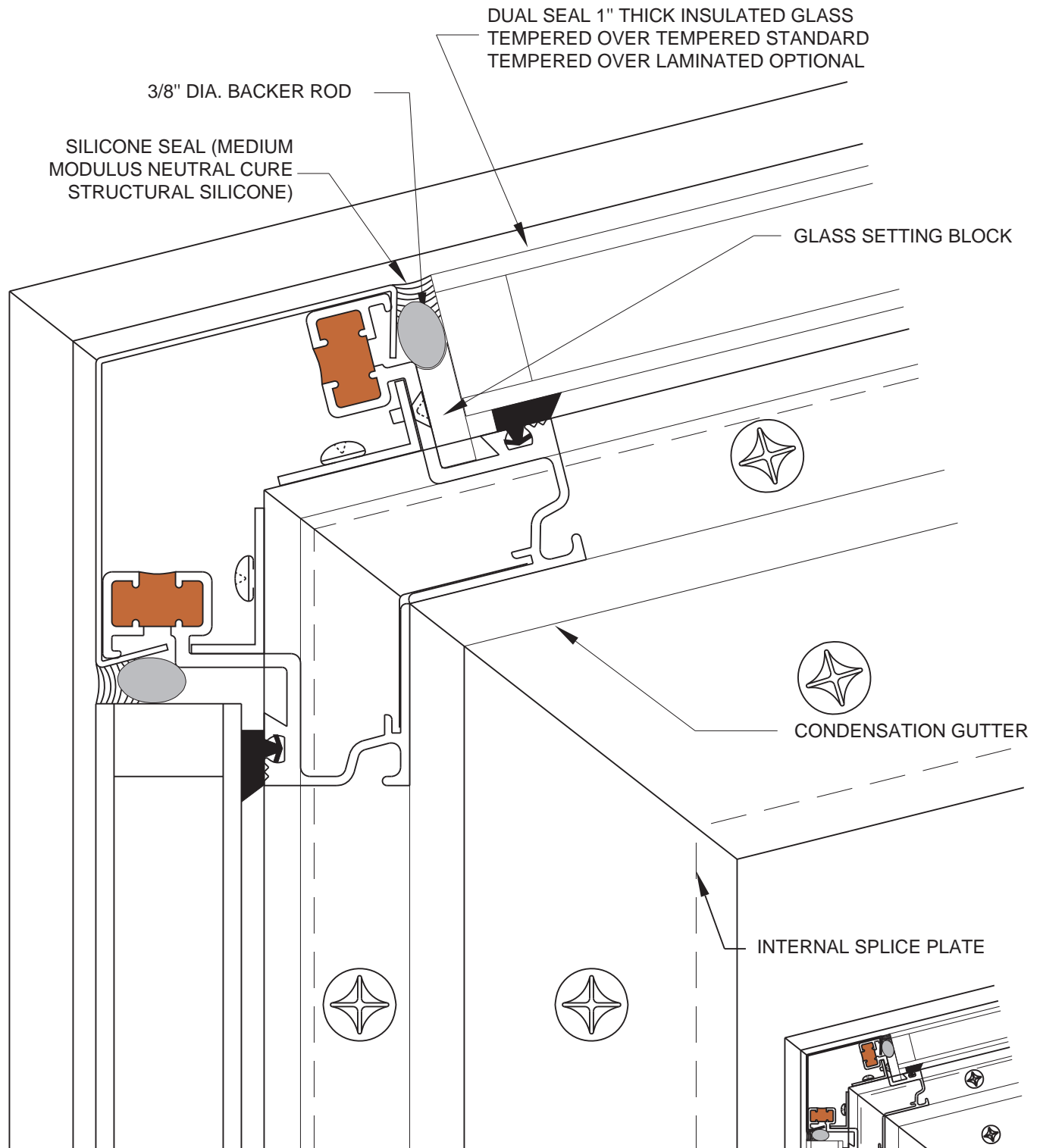
EXTERIOR CAPPED CROSS BAR

Unlike a window, a sunroom is susceptible to great lateral stress because of its three dimensional design and its large gable ends. A very important function of the cross bar is to serve as bridging between rafters and to prevent this great lateral stress. A deeper TUBULAR cross bar is necessary to perform this task adequately. The cross bar should contain both a primary gutter and a horizontal condensation gutter that will drain to the rafters gutter. This will assure complete drainage of any condensate from the glass or the frame. Having the horizontal condensation gutter directly overlapping the rafters gutter not only maximizes performance of the gutters but adds strength to the entire system. Slotted holes are utilized at all cross bar connections to allow adequate expansion allowance for the difference in movement between materials.



1/4 SIZE DETAIL

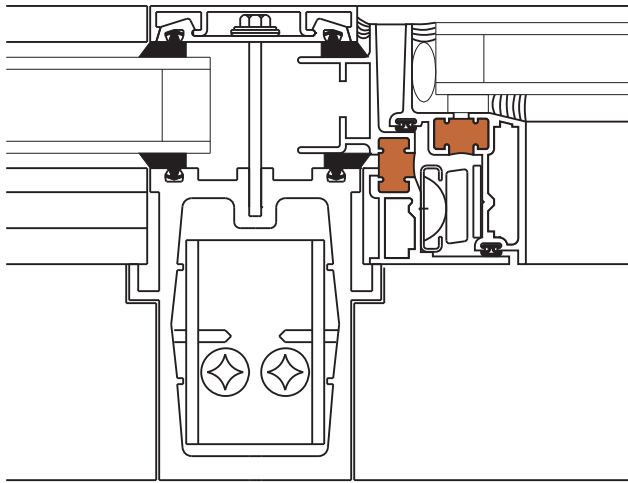
FULL SIZE DETAIL



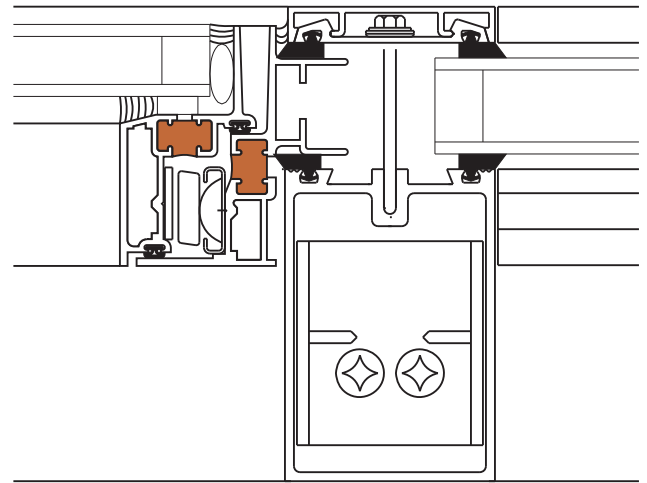
BUTT GLAZED EAVE (Standard)

Similar in structural requirements to the cross bar, the butt glazed eave is tubular to give lateral support to the frame. The butt glazed (KLEERTEK) system is standard because of its ideal use in keeping the eave sightline minimal both inside and out. It also eliminates any possible water accumulation above any caps.

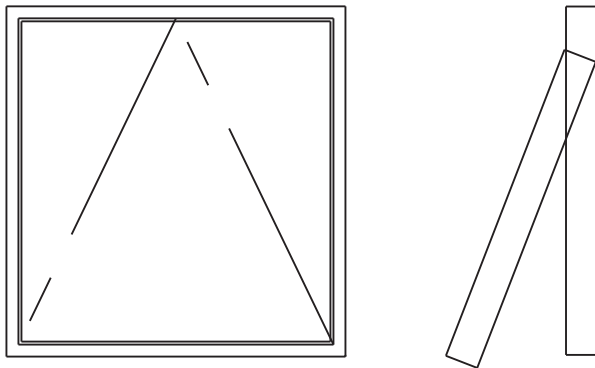
FULL SIZE DETAIL



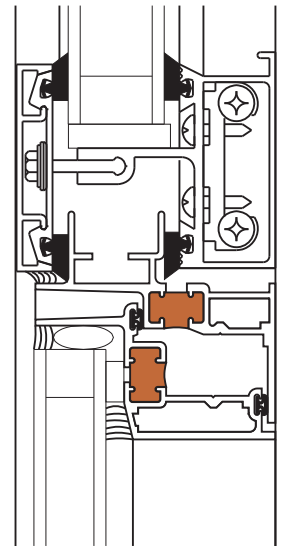
FRONT RAFTER



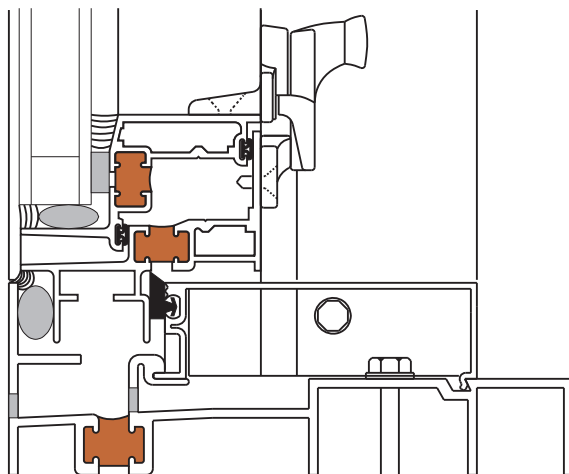
GABLE RAFTER



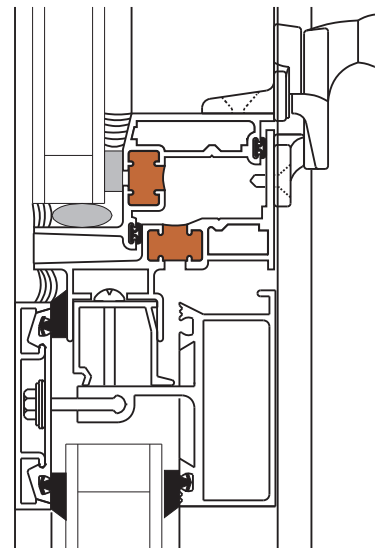
SUNBILT KLEERTEK™
FOUR SIDED BUTT GLAZED
PROJECTED VENTILATORS.



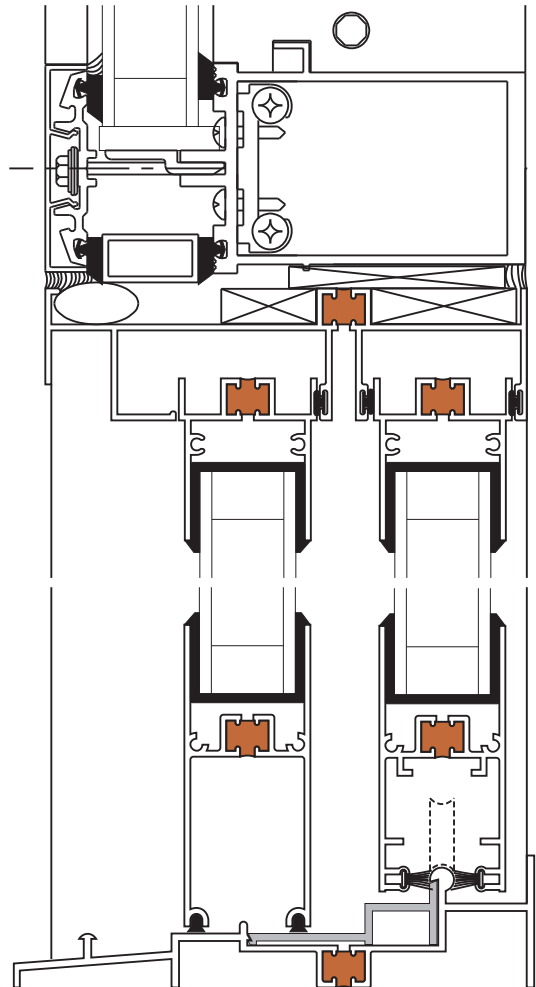
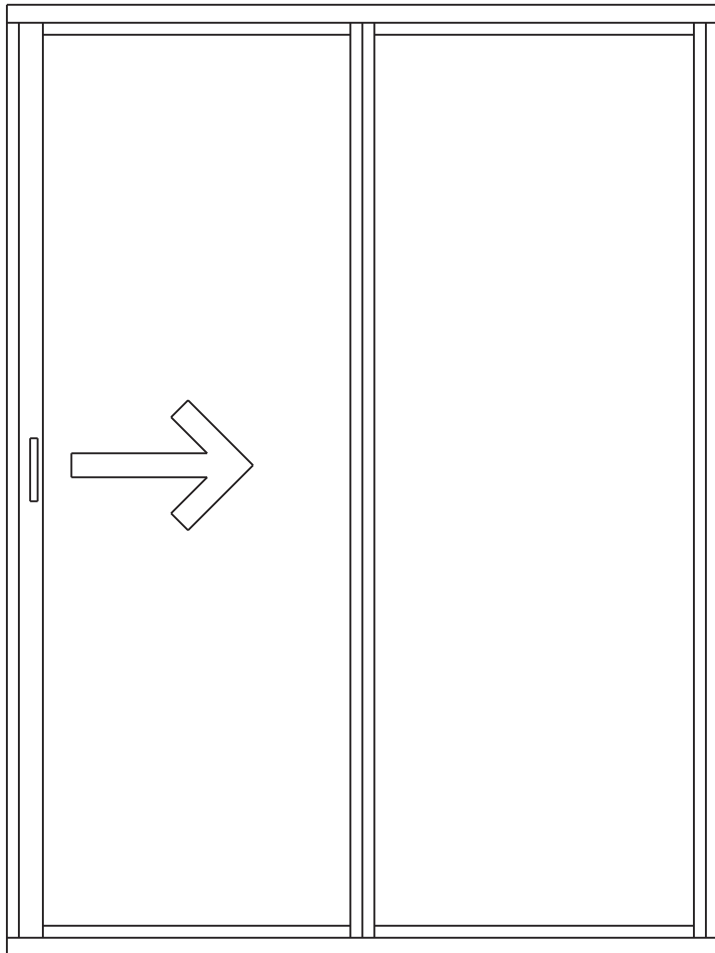
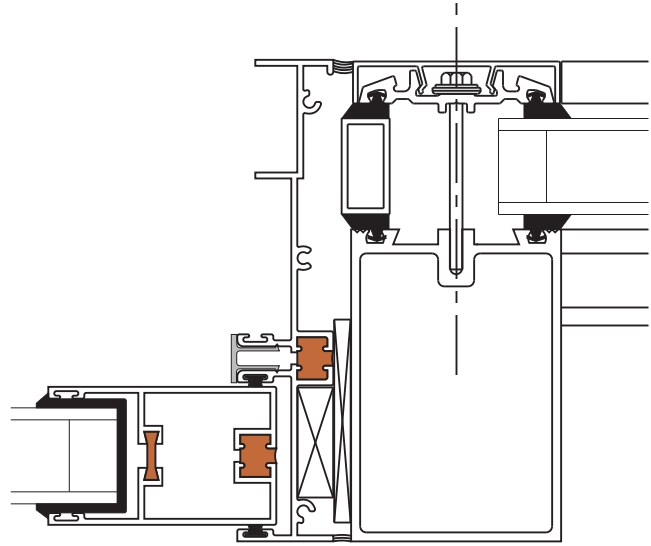
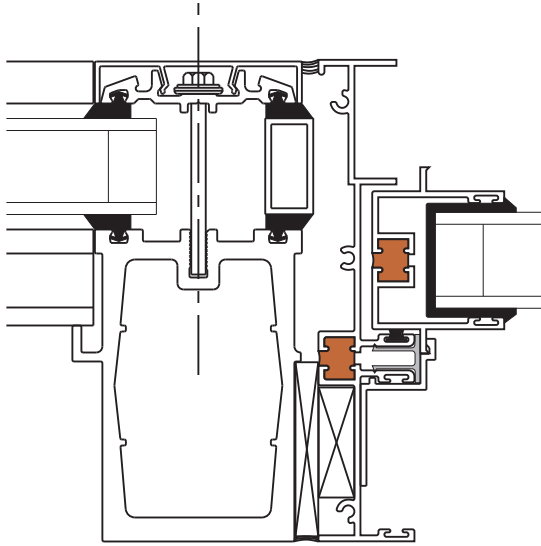
TOP CROSS BAR



SILL



BOTTOM CROSS BAR



SUNROOM ACCESSORIES

PATIO DOORS

Sunbilt's NEW IMPROVED 5 foot wide sliding door is 100% thermally broken with 1" tempered insulating glass. The commercial performance rating exceeds most residential construction requirements and is ideal for commercial and industrial installations. Tandem steel rollers are standard. A NEW specially designed heavy duty tubular extruded screen is included. Available with clear or bronze tinted glass (standard). Low E and reflective glass can be ordered special.

SWING DOOR

Sunbilt does not provide doors other than our Patio door. When other kinds of doors are required Sunbilt will provide the proper opening to incorporate the desired door type. Specify size and location.

PROJECTED WINDOWS

Sunbilt's 30" high project out Kleertek © ventilator offers minimal horizontal and vertical sightlines enhancing the aesthetics of the sunroom. The ventilators are 100% thermally broken and exceed heavy commercial performance specifications (highest standard in the industry). They contain white bronze handles and heavy duty four bar concealed hinges to make them attractive, easy to operate and weathertight. All ventilators come with extruded screens. Available with clear or bronze tinted glass (standard). Low E and reflective glass can be ordered special. Project-in and casement ventilators are also available at additional cost.

FANS

Vent-Axia fans are the finest energy efficient sunroom fans on the market. They are quiet, reliable, and attractive, offering the perfect solution to your ventilating needs. Backed by a 2 year warranty. Includes thermostat (switches not included). When ordered with the sunroom it includes special glass with hole cut out to accommodate the fan. Surface or flush mounted 3 speed controllers are available at additional cost, providing 645/833/950 cfm performance.

WES TC1000T fans are roof mounted, 2 speed, 500/800 cfm energy efficient and quiet exhaust fans. Available in bronze or white. Includes internal and external thermostats. Requires hard wiring. 60HZ, 115V.

SKYLIGHTS

A thermally broken operating roof skylight designed to glaze in place of a fixed lite. Available in clear, bronze tint or Low E bronze tinted glass. Includes screen. Available in 2 standard sizes: 28 1/2" X 29 1/2" and 28 1/2" X 61 1/2".

GABLE ENDFILLER KIT

Used to fill in area under roof overhang. Kit includes two gable end rafters, cross bars and all hardware necessary to fill an opening up to 32 inches wide and 10 feet high. Obtain required glass from local glazier or your authorized Sunbilt Dealer.

GLASS OPTIONS & PERFORMANCE VALUES

CURVED GLASS

Standard curves are tempered over tempered and are supplied with the same glass type as the front except when Low E bronze glass is specified for the front, bronze curves are supplied. Special laminated glass curves and solar cool tempered curves are available at additional cost.

FLAT GLASS

Clear Glass - Tempered over tempered 1" insulated dual sealed glass with bronze spacers is standard.

Bronze Tinted Glass - A bronze tint impregnated in the glass to enhance the color of indoor and outdoor objects while reducing glare.

Low Emissivity Glass - A "state of the art" high performance glass that can add year round comfort and energy savings. The glass contains a transparent coating on the inner light of glass that acts like a mirror. In the winter it bounces heat back into the room that might readily escape but in the summer it provides cooler indoor temperatures by preventing outdoor heat from entering the room. Available with bronze tinted glass to reduce glare. Low E glass is a highly recommended option.

Eclipse Bronze Reflective Glass - An outside coating of a transparent oxide with a permanent light and heat reflective surface that will provide cooler indoor temperatures and also reduce glare. This is highly recommended in warmer climates where cooler indoor temperatures and excessive glare from the sun is a primary concern. Available only with 1/4" tempered over 1/4" laminated safety glass.

Tempered Glass - Standard with all sunrooms. It is 5 times stronger than annealed glass. Unlike annealed glass, tempered glass will break into tiny fragments. It can not be cut after tempering.

Laminated Glass - Composed of two lights of glass with a .030 vinyl sheet bonded between them. If a roof panel should break the laminated light will prevent the glass from falling out of the opening. Sunbilt offers an added cost option of tempered over laminated glass on all roof glass. Consult your local building code for roof glass requirements.

Insulated Panels - 1" insulated aluminum stucco panels are available in lieu of glass at an additional cost. Available with white or bronze paint finish.

GLASS PERFORMANCE VALUES

DESCRIPTION	"U" VALUE		"R" VALUE		Shading Coefficient	% Light Transmittance		% Light Reflectance		Relative Heat Gain
	Winter	Summer	Winter	Summer		Visible	Solar	Visible	Solar	
Clear 1/8" over Clear 1/8"	0.50	0.54	2.0	1.85	0.91	82	74	15	14	190
Bronze 1/8" over Clear 1/8"	0.50	0.55	2.0	1.82	0.76	62	59	11	11	160
Bronze 1/8" over Low E 1/8"	0.33	0.36	3.03	2.78	0.66	57	45	12	12	137
Clear 1/8" over Clear 1/4" Laminated	0.50	0.57	2.0	1.75	0.86	77	67	18	16	180
Bronze 1/8" over Clear 1/4" Laminated	0.50	0.58	2.0	1.72	0.72	59	53	13	12	152
Bronze 1/8" over Low E 1/4" Laminated	0.33	0.39	3.03	2.56	0.62	54	39	14	13	130
Eclipse Bronze 1/4" ov Clear 1/4" Laminated	0.48	0.55	2.08	1.82	0.37	23	25	45	37	81



5 YEAR LIMITED WARRANTY

GENERAL INFORMATION

The Sunbilt Sunroom prices include the aluminum structure, glass and all required hardware and accessories. Not included in the Sunbilt Sunroom price list are: installation costs, flashing, heating equipment, foundations, masonry or wood framed walls, electrical wiring or plumbing and flashing.

The manufacturer of Sunbilt Sunrooms reserves the right to change prices, designs and specifications without notice. All orders are subject to approval by the home office of Sunbilt Solar Products by Sussman, Inc. 109-10 180th Street, Jamaica, New York 11433.

TERMS OF SALE & DELIVERY

A minimum 25% deposit is required on all Sunbilt Sunrooms and accessories with the balance C.O.D. or paid for before delivery. Once production has started the deposit becomes nonrefundable. A larger deposit will be required on custom sunrooms. Shade systems must be fully paid for when order is placed. Customer must pay balance for unit upon completion or will be responsible for reasonable storage and service charges (consult home office for schedule of charges). All Sunbilt Sunrooms and accessories are shipped freight collect, F.O.B. Jamaica, New York unless other arrangements are made in advance. Accessories such as fans and shade systems may be shipped via UPS or common carrier F.O.B. shipping point and may not arrive with the Sunroom. All freight costs are the responsibility of customer. If delivery is to customer's job site, make certain someone is at job site to receive all materials and pay all charges or you may be charged for redelivery. We will ask delivering carrier to notify you in advance before attempting delivery. Provide us with a phone number where you can be reached.

All Sunbilt Sunrooms are sold F.O.B. Jamaica, New York. Delivery to the initial carrier constitutes delivery to the customer. Upon delivery to the initial carrier this corporation's responsibility ceases and goods are shipped at the customer's risk.

FREIGHT CLAIMS

It is the customer's responsibility to examine all deliveries carefully before signing transportation receipts. If goods are visibly damaged or short, customer should insist that written confirmation of the damage or shortage be noted on the freight bill by the agent of the carrier. If damage is discovered after unpacking, the carrier should be notified at once, so that inspection can be made and the claimed damage substantiated by the carrier no later than 10 days after delivery.

5 YEAR LIMITED WARRANTY

Sunbilt Sunrooms are warranted to the original purchaser to be free of defects in material and / or workmanship under normal use and service for a period of five years from the date of delivery. The warranty includes the aluminum framework, and the factory seal on all factory insulating glass panels including tempered and laminated curved glass. No warranty protection is afforded against glass damage or breakage. All accessories including fans, doors, and shade systems carry the specific manufacturers warranty. Sunbilt's obligation under this warranty is limited to the repair or replacement, at Sunbilt's option, of any defective Sunbilt Sunroom parts. Sunbilt reserves the right to determine whether a defect exists under the terms of this warranty. Written authorization is required for all returns. If the part is determined to be defective the original purchaser must return the defective part(s), shipping charges prepaid to Sunbilt. Sunbilt will then ship a replacement part back freight prepaid.

This warranty does not cover the replacement of parts, accessories or

equipment due to misuse, accident, alteration, negligence or lack of reasonable and proper installation or maintenance. This warranty does not cover loss of time, inconvenience, loss of use of the product or damage incurred by the products performance or improper installation, nor does it cover delays or construction costs for late or damaged delivery or incidental or consequential damage.

Sunbilt does not authorize any person, representative, dealer or distributor to create any obligation or liability in connection with the Sunbilt product. There shall be no other warranty, express or implied, due to the many varied conditions for which this product may be used. This warranty shall be governed by and construed in accordance with the laws of New York. It is agreed that any controversy arising out of this warranty be submitted for settlement by arbitration to and under the rules of the American Arbitration Association in New York, New York. When purchased through an authorized Sunbilt dealer, all warranty claims shall be submitted to that dealer.

ANY IMPLIED WARRANTY APPLICABLE TO THESE PRODUCTS IS LIMITED IN DURATION TO THE DURATION OF THIS WRITTEN WARRANTY. SUNBILT SOLAR PRODUCTS BY SUSSMAN, INC. SHALL NOT BE LIABLE FOR INCIDENTAL OR CONSEQUENTIAL DAMAGES RESULTING FROM BREACH OF THIS WRITTEN WARRANTY OR ANY IMPLIED WARRANTY.

THIS LIMITED WARRANTY GIVES YOU SPECIFIC LEGAL RIGHTS AND YOU MAY ALSO HAVE OTHER RIGHTS WHICH VARY FROM STATE TO STATE. SOME STATES DO NOT ALLOW THE EXCLUSION OR LIMITATIONS OF INCIDENTAL OR CONSEQUENTIAL DAMAGES OR LIMITATIONS ON DURATION OF IMPLIED WARRANTIES, SO THE ABOVE LIMITATIONS AND/OR EXCLUSIONS MAY NOT APPLY TO YOU.

Sunbilt Sunrooms are designed to meet or exceed all known building code requirements. Please note, however, that Sunbilt's responsibility for compliance with any building code is limited to supplying what the customer ordered.

The customer should be aware that different localities may have varying requirements and interpretations for sunroom parts and accessories. This includes glass types (tempered, laminated, plastic or other) and definitions (sloped glazing, vertical, or curved glass) as well as requirements for other sunroom parts.

Interpretation of building code criteria is the responsibility of the customer or his agent(s). For this reason, Sunbilt Solar Products by Sussman, Inc. shall not be held liable for damages resulting from noncompliance in any way with applicable local or national building code glazing or other requirements.

This warranty does not cover labor costs to install the replaced parts, equipment or accessories or other costs or expenses that might be incurred as a result of defective parts, equipment or accessories.

THIS WARRANTY DOES NOT COVER THE INSTALLATION OF PRODUCTS UNLESS SUCH INSTALLATION IS CONTRACTED WITH SUNBILT AT ITS HOME OFFICE.

In the event that the buyer makes any claim against Sunbilt Solar Products By Sussman, Inc. which results in any proceeding and that claim is dismissed or no judgment is entered against Sunbilt, or such claim is otherwise resolved in favor of Sunbilt., the buyer shall pay all costs and expenses and attorneys fees incurred by Sunbilt in the defense of that claim.

PRICES AND SPECIFICATIONS SUBJECT TO CHANGE WITHOUT NOTICE.

PART I: GENERAL

1.1 SCOPE

- a. This section includes all work necessary for completion of custom skylight, walkway, greenhouse and dome systems hereafter referred to as skylight(s). Furnish all necessary labor materials and equipment for the complete installation of custom skylight work as shown on drawings and herein specified.
- b. The work includes, but is not limited to the following:
 1. Design, fabrication, and erection of aluminum framing system.
 2. Glass and glazing
 3. Perimeter flashing as required
- c. Related work specified elsewhere
 1. Structural support of framing system
 2. Flashing and counter flashing except as indicated by skylight manufacturer
 3. Final cleaning and protection of skylight
 4. Other (as specified by architect)

1.2 QUALIFICATIONS

The skylight(s) shall be J. SUSSMAN'S extruded aluminum tubular system model SK 5000 as manufactured by: J. SUSSMAN INC., 109-10 180th Street, Jamaica, NY or approved equal.

1.3 LOADING REQUIREMENTS

Aluminum framing system(s) shall be designed to support _____ lbs/sq. ft. live load and _____ lbs/sq. ft. wind load.

1.4 GUARANTEE

The skylight systems(s) supplied under this section shall be guaranteed for a period of one year after acceptance, against leakage, defective design, defective materials and construction. The guarantee is limited to repair or replacement of materials supplied and does not include consequential damages.

PART II: MANUFACTURE

2.1 MATERIALS

- a. Extruded aluminum framing members shall be 6063-T5 or suitable alloy and temper for adequate structural characteristics and specified finishing. Shape and thickness of aluminum shall be dependent upon performance requirements.

- b. Aluminum flashing shall be of alloy and temper to make it compatible with specified finish.
- c. Finish: (Architect to specify clear anodized, integral color anodizing, baked enamels, Kynar, other.)
- d. All exposed fasteners shall be stainless steel. Unexposed fasteners shall be cadmium plated steel.
- e. Rafters and purlin members shall be tubular and have condensate gutters which shall drain moisture to exterior. Fastenings shall be concealed.
- f. All sill members shall be extruded and shall run continuously past rafter members to provide a positive drainage gutter with weep holes at every rafter. Vertical sill members shall have no exposed fasteners.
- g. All clamping bars shall be fastened by No. 10 stainless steel screws located at a maximum of 12" on center. Screws shall be sealed and then concealed by means of an extruded aluminum snap in channel.
- h. Glazing
 1. Exterior glazing (architect to specify clear, tinted, reflective, tempered, wired, laminated, insulated glass, acrylic or polycarbonate, other.)
 2. Interior glazing as required.
- i. Gaskets shall be extruded neoprene or EPDM of 50 to 60 durometer above and below glass or plastic.
- J. Sealants used shall be a one part silicone.

PART III: EXECUTION

1.2 INSTALLATION

Erection shall be done only by qualified personnel, in strict accordance with manufactures instructions.

In the interest of product improvement, all specifications are subject to change without notice.

Creative Sunrooms

Sunbilt Solar Products by Sussman, Inc.

DATE: _____

Purchaser: _____

P.O. # _____ Job: _____
 Ship to: _____

Phone: _____ Fax: _____

Att.: _____

DESC.	ITEM	QTY.	EA.	TOTAL
Model _____	Base (3 bays)	1		
No. of Bays _____	Added Bays			
Gables _____	Left Gable _____			
Bronze Painted <input type="checkbox"/>	Right Gable _____			
White Painted <input type="checkbox"/>				
Filler Kit <input type="checkbox"/>				

Clear Frame with clear glass **→** 1

GLASS OPTIONS	ITEM	QTY.	EA.	TOTAL
Bz. Tinted <input type="checkbox"/>	Front <input type="checkbox"/> <input type="checkbox"/>			
Low "E" <input type="checkbox"/>	Roof <input type="checkbox"/> <input type="checkbox"/> <input type="checkbox"/>			
Eclipse Roof (Laminated) <input type="checkbox"/>	Gables <input type="checkbox"/> <input type="checkbox"/>			
Lami. Roof	Laminated Roof			
S/C Curves	Solar Cool Curves			

Glass Options **→** 2

WINDOWS DOORS	ITEM	QTY.	EA.	TOTAL
Location _____	Std Sliding Patio Door			
If door in front specify bay	Other Specify:			
Standard <input type="checkbox"/>	Std. Project-Out			
Other <input type="checkbox"/>	Other Specify:			

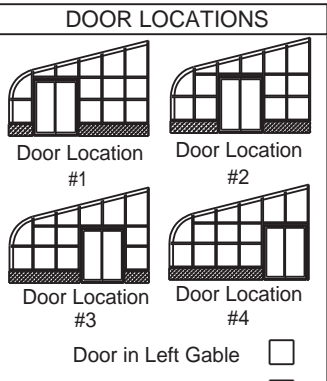
Doors and Windows **→** 3

SKYLIGHTS	ITEM	QTY.	EA.	TOTAL
Bronze <input type="checkbox"/>	Std. Manual			
White <input type="checkbox"/>	Extension			
Type of Glass	Motor			
* Roof Fan Bronze <input type="checkbox"/>	TC1000T			
Roof Fan White <input type="checkbox"/>				
* FANS				
Vent-Axia Fans <input type="checkbox"/>				
Location and Gable _____				
Controller <input type="checkbox"/>	Surface <input type="checkbox"/> Flush <input type="checkbox"/>			

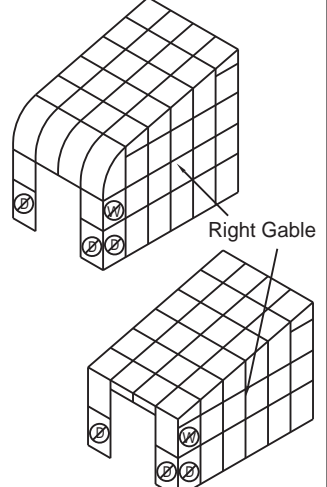
Skylights and Fans **→** 4

SHADES	ITEM	QTY.	EA.	TOTAL
Color _____	Manual (May not retract fully)			
Newport <input type="checkbox"/> Aspen <input type="checkbox"/>	Motorized			
Manual <input type="checkbox"/>	Motors			
Motorized <input type="checkbox"/>	Valences			

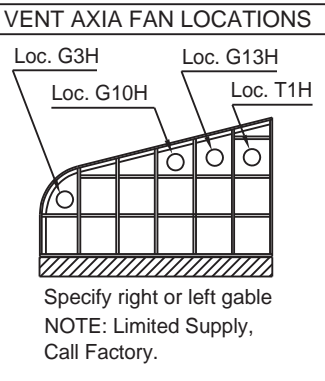
Shades **→** 5



Door in Left Gable
 Door in Right Gable
 Door in Front (specify bay location)



This bay will not accommodate door.
 This bay will not accommodate window.
 Note: Only XH or TS curve eave models can accommodate a door in front.
 KW model with door in front must be on 48" knee wall.
 GG model with door in front must be on 32" knee wall.



PRICE SUMMARY

Frame	1	
Glass Options	2	
Doors/Windows	3	
Skylights/Fans	4	
Shades	5	
Total for Order		
Total Net Amount		
Sales Tax		
Total Amount		
* 25% DEPOSIT		
Balance		

Ship ASAP
 Hold, Ship on _____ (specify date)
 Ship COD (cash or certified check)

* Accessories must be paid in full at time of order plus 25% deposit of the balance.
 Shades and fans are shipped separately.
 Freight cost is responsibility of customer.
 All orders F. O. B. Jamaica, New York.
 Prices and specifications subject to change without notice.