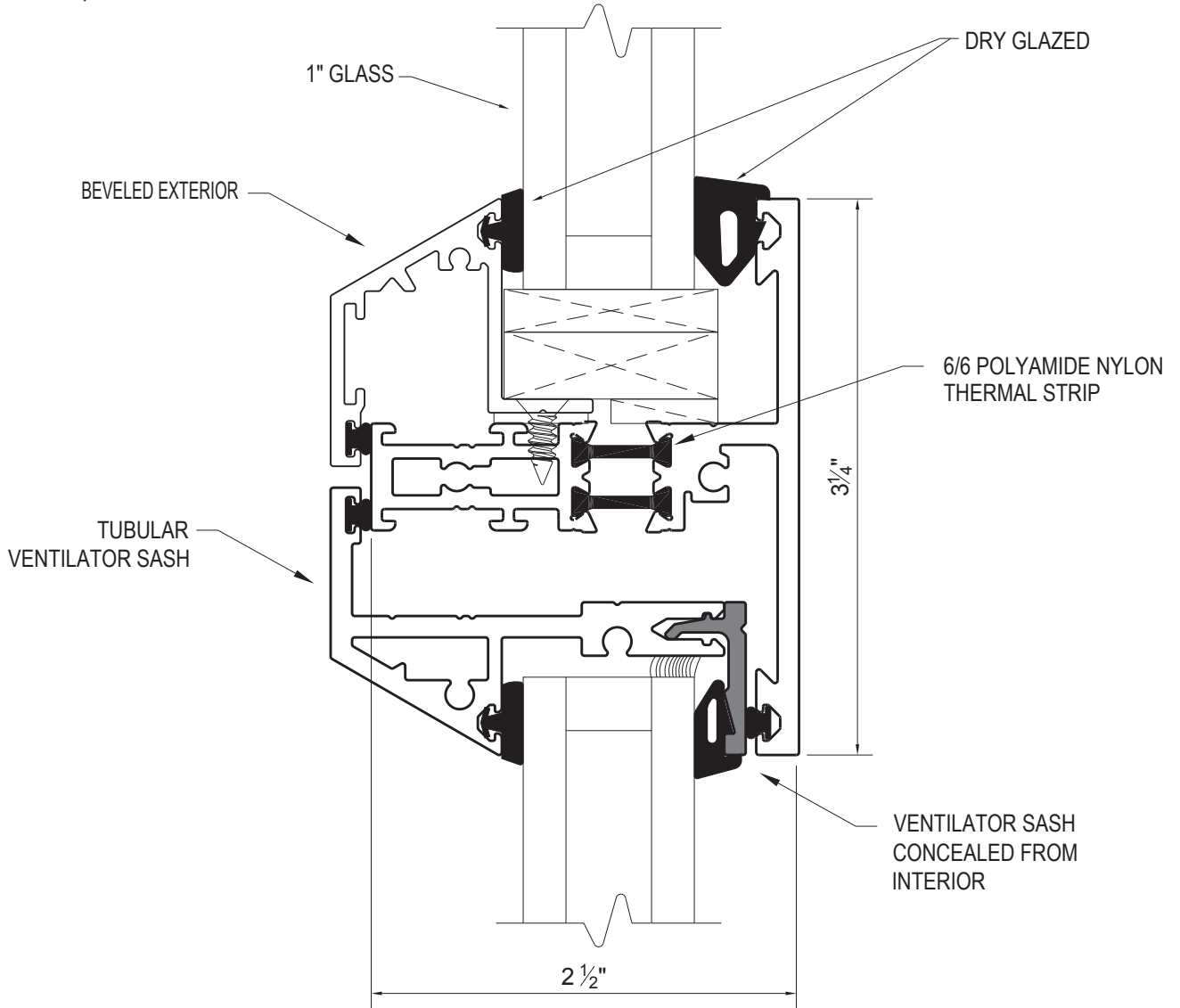




The 4600 series is a historical replication window with a beveled exterior and with narrow and equal site lines at vents and fixed lites. Thermally broken using Thermal Strip technology[©] allows different finishes interior and exterior. Available as project-out vents, outswing casements, fixed lites or combinations of each.



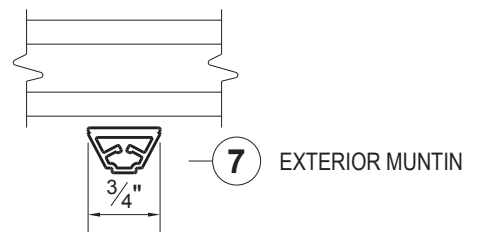
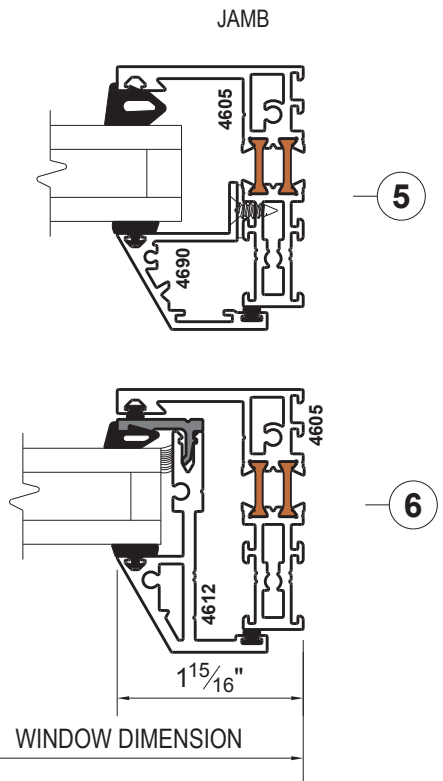
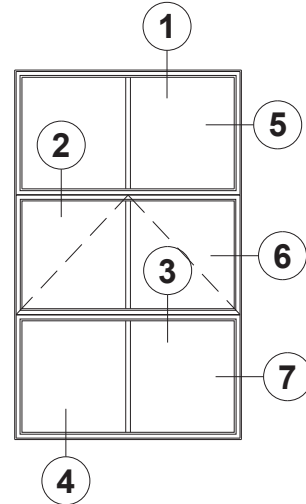
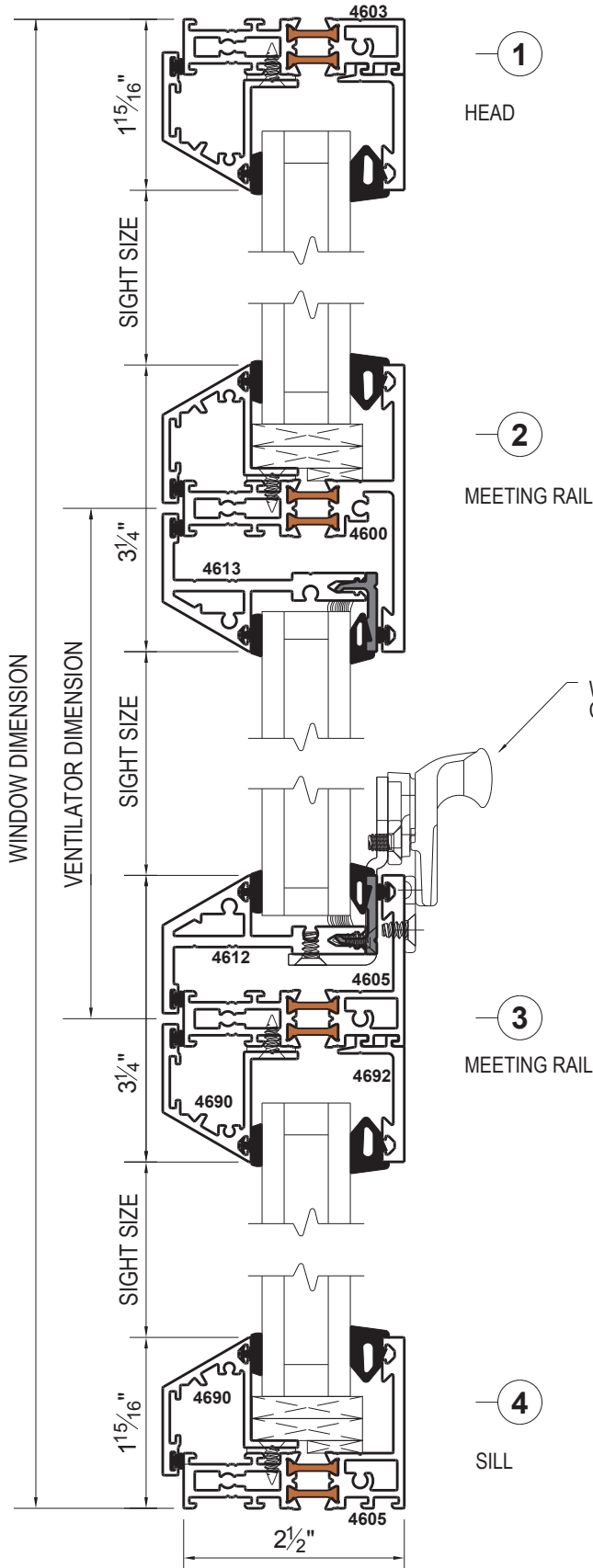
SCALE = FULL SIZE

Features:

- AAMA AP-HC65, F-AW65 Performance Class
- Full 2 1/2" deep frame with tubular muntins, meeting rails and ventilator sash. Ventilator sash is angle reinforced. *(Consult factory for full specifications)*
- Beveled exterior to replicate the appearance of steel putty glazed windows.
- Narrow and equal site lines at vents and fixed lites. Ventilators are indistinguishable from fixed lites and concealed from the exterior.
- The thermal strip is a specially formulated and constructed extrusion of glass fiber reinforced 6/6 polyamide nylon. Besides being thermally efficient, these high strength strips have the same coefficient of expansion as aluminum so that the structural integrity of the window is intact.



FIXED OVER PROJECT-OUT OVER FIXED

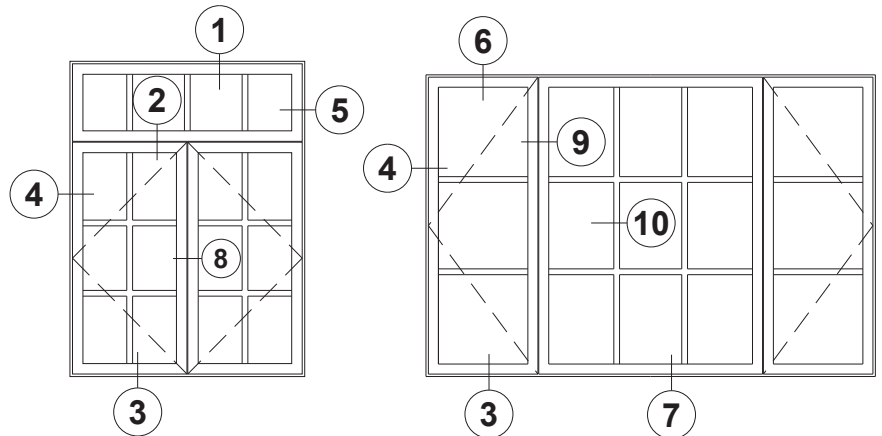
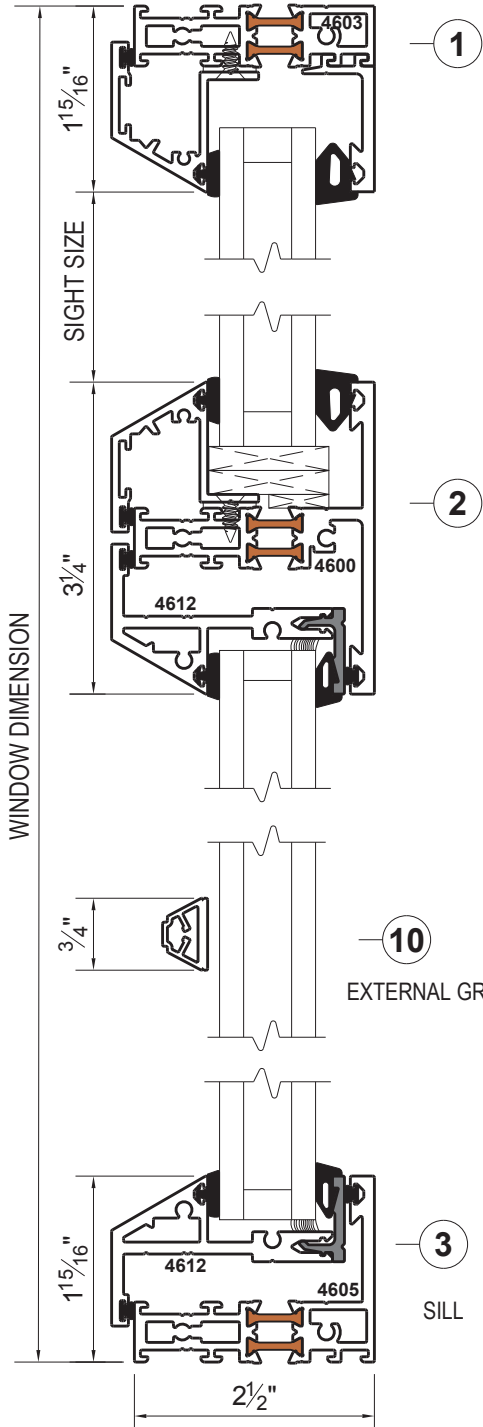


SCALE = HALF SIZE

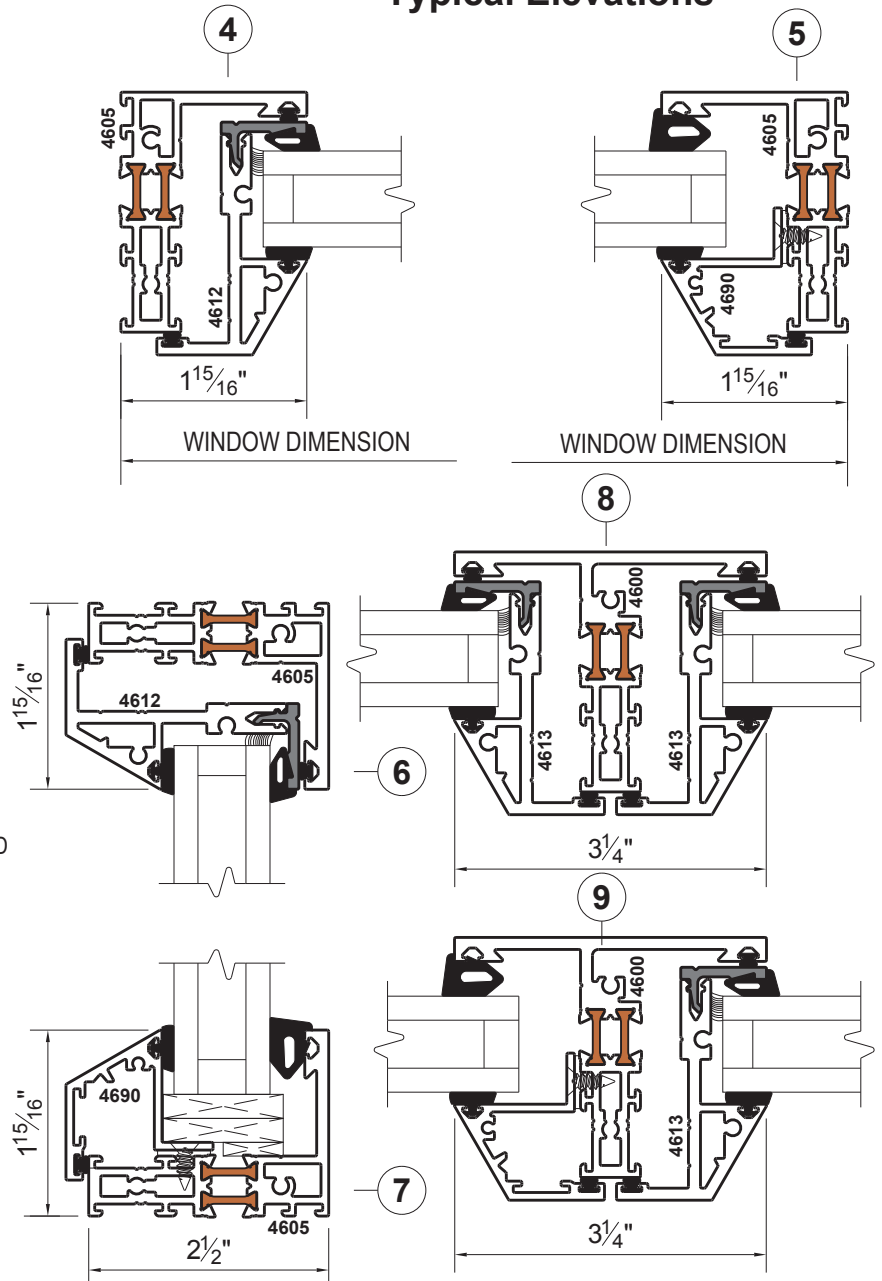


OUTSWING CASEMENT

Hardware not shown. Push-pull operation with cam handles and stainless steel concealed 4 bar hinges are standard. Crank operation with rotos and 5 knuckle extruded aluminum butt hinges are optional.



Typical Elevations



SCALE = HALF SIZE